

ecooustic[®] panel: 25mm



Available from

 **POTTER**
INTERIOR SYSTEMS

INSTYLE

ecooustic[®] panel



White*



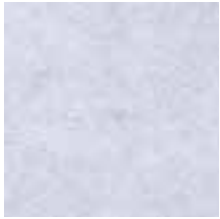
Cream*



Natural*



Oatmeal*



Opal*



Light Grey



Pewter



Charcoal



Spray*



Sky*



Cobalt



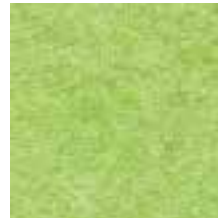
Indigo



Fresco*



Lime



Green



Caper



Yellow



Orange



Red



Cameo*



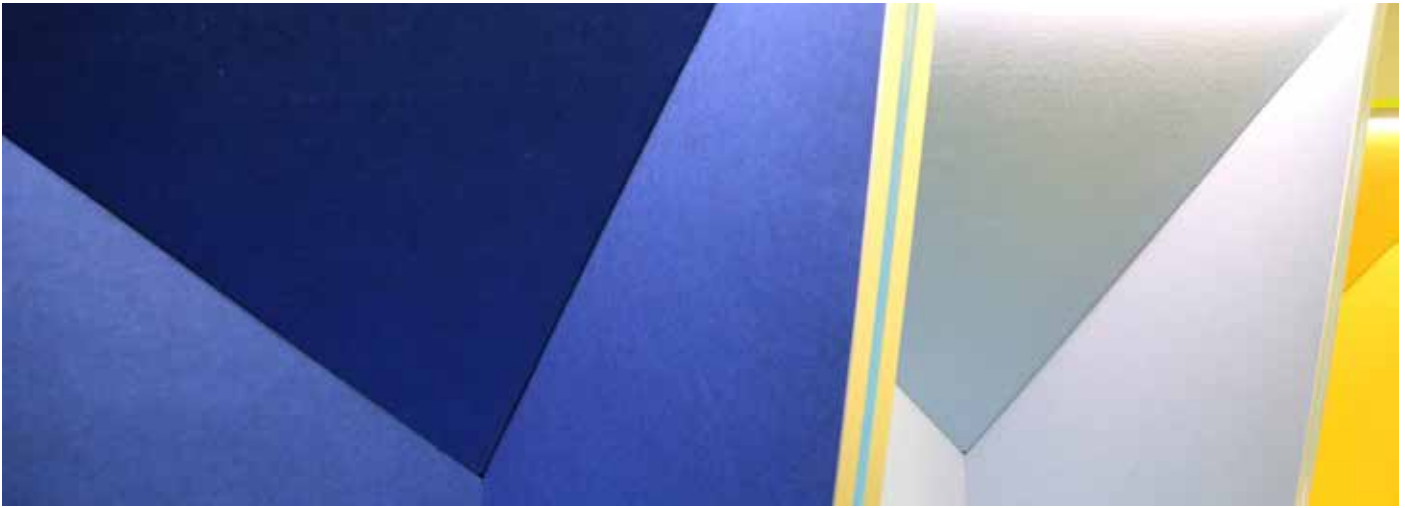
Taupe



Jet

*White, Natural, Sky, Cream, Cameo, Fresco, Oatmeal, Opal + Spray are supplied with white core, other colours are supplied with black core
Product may vary in colour due to the nature of the media
Please refer to website for current colour range

ecoustic[®] panel: 25mm



COMPOSITION	100% PET (>50% recycled PET)	
THICKNESS	25mm (+/- 2mm)	
WEIGHT	2650gsm (+/- 10%)	
DENSITY	102kg/m ³	
DIMENSIONS	1210 x 2720mm (+/- 5mm, 10mm respectively)	
LIGHTFASTNESS ISO 105-B02	> 6	
FIRE RATINGS AS/ISO 9705	BCA Group 1 SMOGR _A <100 NZBC Group 1-S	
GB8624-2012	Grade B1	
ACOUSTIC AS/ISO 354	Direct Fix	NRC 0.80
	25mm Airgap	NRC 0.85
THERMAL PERFORMANCE	R 0.7	
APPLICATION	wall and ceiling panels	
ORIGIN	Australia	
PLEASE NOTE	<p>Onsite trimming to square each individual panel is essential. Variation in thickness, fibre mix and colour as well as flecks and other slight surface blemishes are an inherent feature of this product and are unavoidable. Variation from batch to batch may occur.</p> <p>We recommend the use of edging profiles for Ecoustic[®] Panel 25mm for optimum results.</p>	

BENEFITS

Improved Sound Absorption: Ecoustic[®] Panel is ideal for medium and high frequency absorption and achieves an NRC 0.80 rating when the panel is directly fixed to a wall. The sound absorption improves if the panel is installed with an airgap.

Improved Pinability: Ecoustic[®] Panel features an improved pinability compared to similar panel products.

Designed for the Environment: Ecoustic[®] Panel is made from over 50% recycled PET. Easy to disassemble and separate into the appropriate recycling systems, Ecoustic[®] Panel can be recycled through Instyle's Revive program.

Low VOC + Greentag Level A Certification: Ecoustic[®] Panel is certified low-VOC and is Greentag Level A Certified.

Green Star: Ecoustic[®] Panel is Greentag Level A Certified and can achieve maximum Green Star points.

LEED: 50% post consumer content contributes to LEED MR Credit 4 Recycled Content.

Thermal Performance: Ecoustic[®] Panel can increase the thermal performance of an existing building by R 0.7.

Lightweight, Easy to Handle + Install: Compared to traditional panels, Ecoustic[®] Panel is lower in weight, easier to handle and results in reduced transportation costs. Ecoustic[®] Panel can be trimmed and installed without the need for additional finishes, which reduces labour and material costs. Installation + Care Guidelines are available on our website.

Optimum Dimensions: Ecoustic[®] Panel is designed to optimally fit with walls, which results in using less labour and materials.

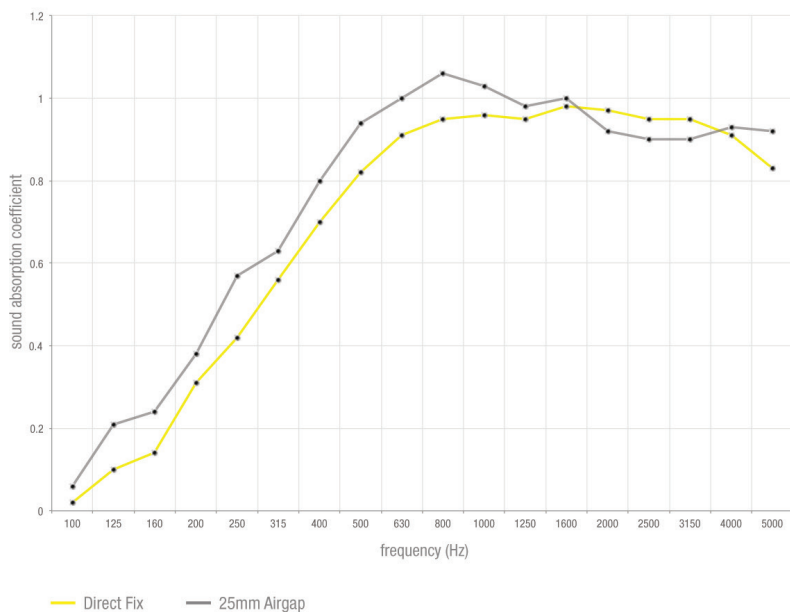
Edging Profile: 25mm natural anodised aluminium edging length at 2750mm (+/- 5mm) with counter sunk holes is available. We recommend the use of edging profiles for Ecoustic[®] Panel 25mm for optimum results.

ecoustic[®] panel: 25mm

SOUND ABSORPTION RESULTS

The sound absorption has been tested in accordance with AS/ISO 354. For complete test reports please contact your local distributor.

25mm panel



Frequency Band	Direct Fix	25mm Airgap
100	0.02	0.06
125	0.10	0.21
160	0.14	0.24
200	0.31	0.38
250	0.42	0.57
315	0.56	0.63
400	0.70	0.80
500	0.82	0.94
630	0.91	1.00
800	0.95	1.06
1000	0.96	1.03
1250	0.95	0.98
1600	0.98	1.00
2000	0.97	0.92
2500	0.95	0.90
3150	0.95	0.90
4000	0.91	0.93
5000	0.83	0.92
NRC	0.80	0.85