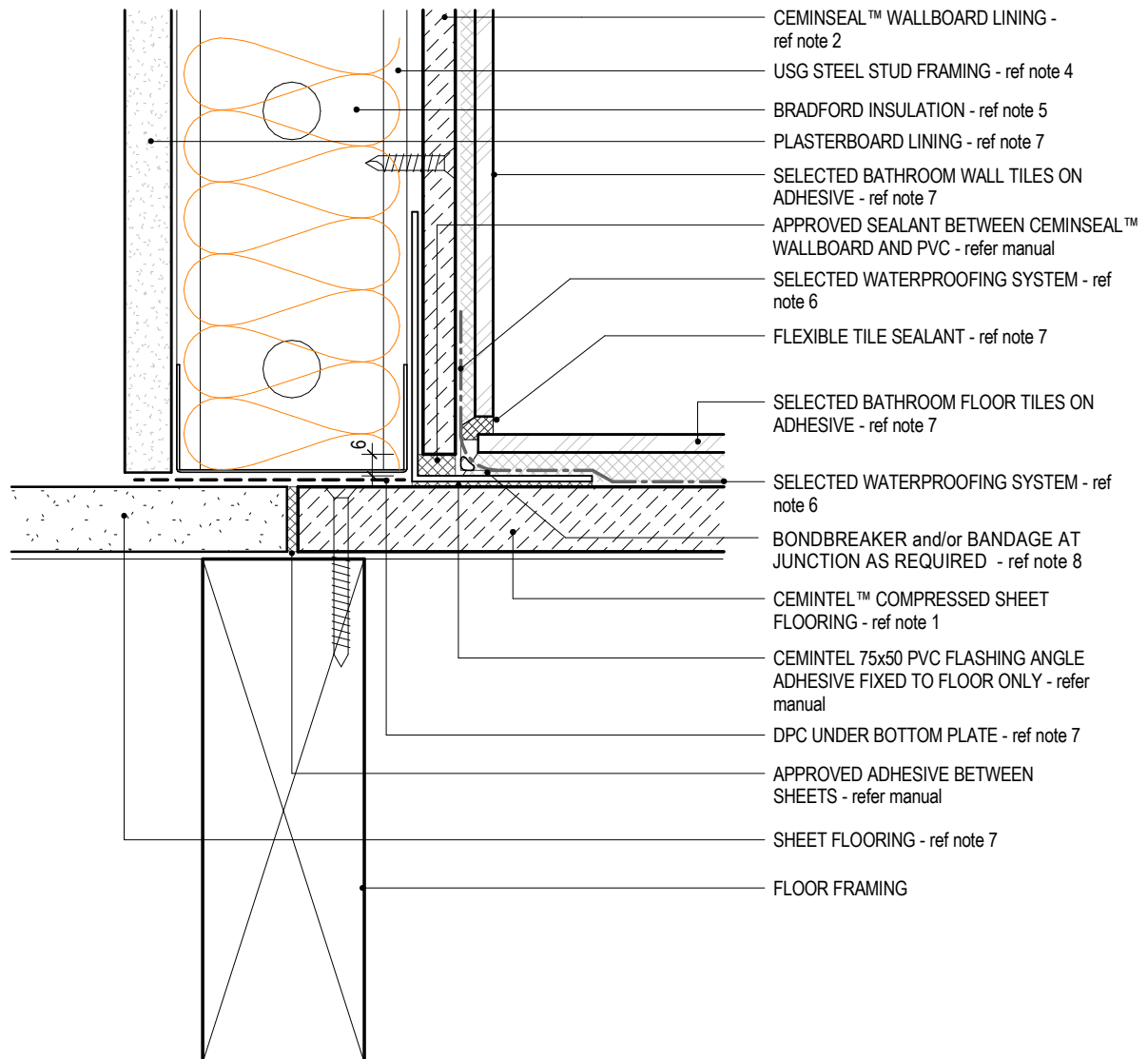


## WALL GENERAL NOTES:

1. NOMINAL 18mm CEMINTEL™ COMPRESSED SHEET SHOWN - refer to manual for additional sheet options.
2. NOMINAL 9mm CEMINSEAL™ WALLBOARD SHOWN - refer to manual for additional sheet options.
3. NOMINAL 9mm CEMINSEAL™ WALLBOARD CEILING SHOWN - refer to manual for additional sheet options.
4. NOMINAL 64mm USG STUD SHOWN - refer to USG manual for span tables.
5. BRADFORD INSULATION AS REQUIRED TO SUIT WALL SYSTEM - refer Architects drawings and specifications.
6. SELECTED MEMBRANE WATERPROOFING SYSTEM INCLUDING BONDBREAKERS and/or BANDAGES AT JUNCTIONS - refer Architects drawings and specifications.
7. AS NOTED - refer Architects drawings and specifications.



## CEMINTEL™ FIBRE CEMENT SYSTEMS WALL/FLOOR JUNCTION - GENERAL WET AREA SECTION DETAIL

**C2.4.1**  
SHEET

1:2@A4  
SCALE

0 18/07/12  
ISSUED DATE

0800 POTTER (0800 768 837) WWW.POTTERS.CO.NZ  
DETAILS SUBJECT TO CHANGE WITHOUT NOTICE

**CSR**