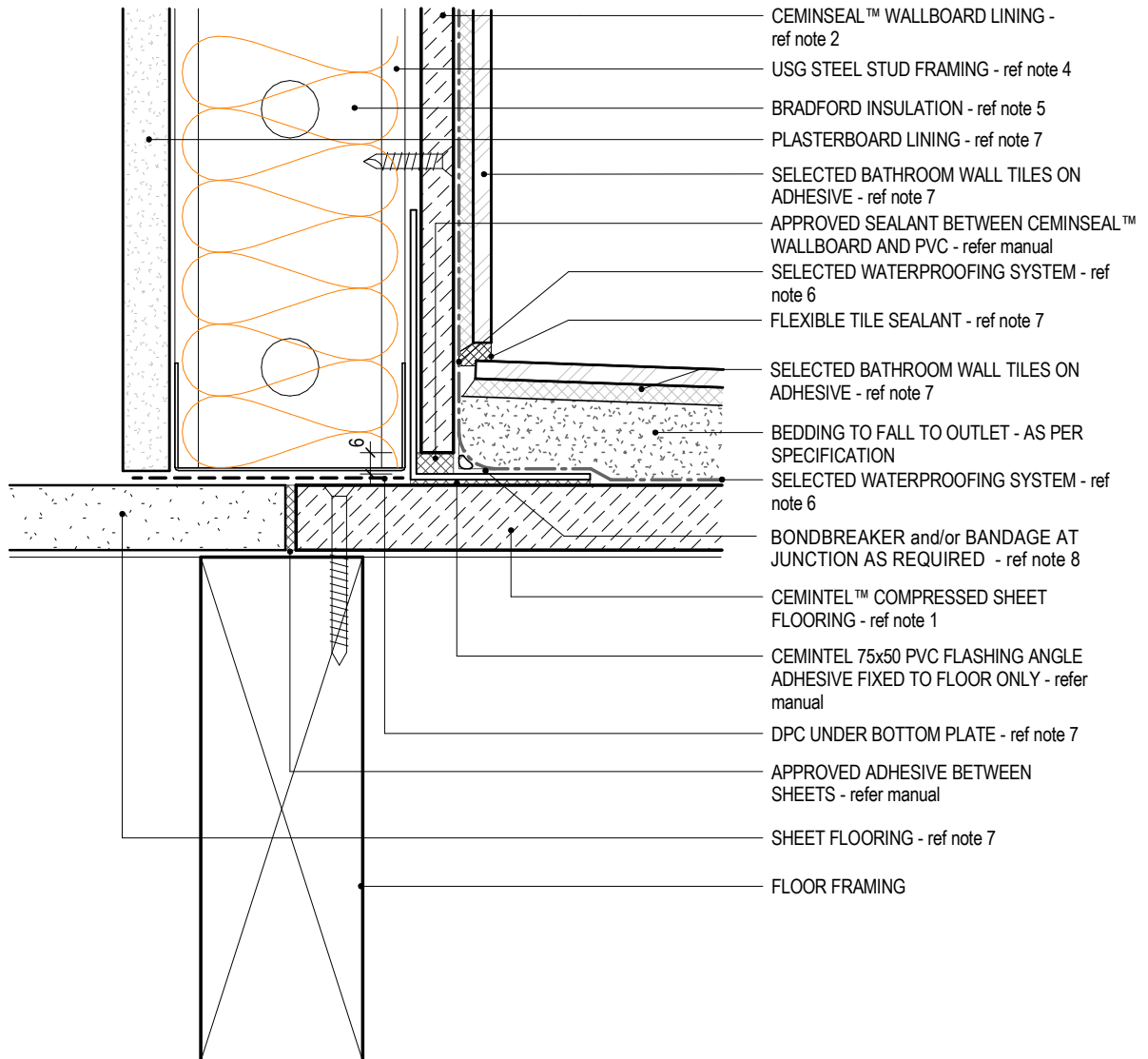


WALL GENERAL NOTES:

1. NOMINAL 18mm CEMINTEL™ COMPRESSED SHEET SHOWN - refer to manual for additional sheet options.
2. NOMINAL 9mm CEMINSEAL™ WALLBOARD SHOWN - refer to manual for additional sheet options.
3. NOMINAL 9mm CEMINSEAL™ WALLBOARD CEILING SHOWN - refer to manual for additional sheet options.
4. NOMINAL 64mm USG STUD SHOWN - refer to USG manual for span tables.
5. BRADFORD INSULATION AS REQUIRED TO SUIT WALL SYSTEM - refer Architects drawings and specifications.
6. SELECTED MEMBRANE WATERPROOFING SYSTEM INCLUDING BONDBREAKERS and/or BANDAGES AT JUNCTIONS - refer Architects drawings and specifications.
7. AS NOTED - refer Architects drawings and specifications.



**CEMINTEL™ FIBRE CEMENT SYSTEMS
WALL/FLOOR JUNCTION - WATER RESISTANT WET AREA
SECTION DETAIL**

C2.4.2 SHEET	1:2@A4 SCALE	0 18/07/12 ISSUED DATE	0800 POTTER (0800 768 837) WWW.POTTERS.CO.NZ DETAILS SUBJECT TO CHANGE WITHOUT NOTICE
------------------------	-----------------	---------------------------	--

