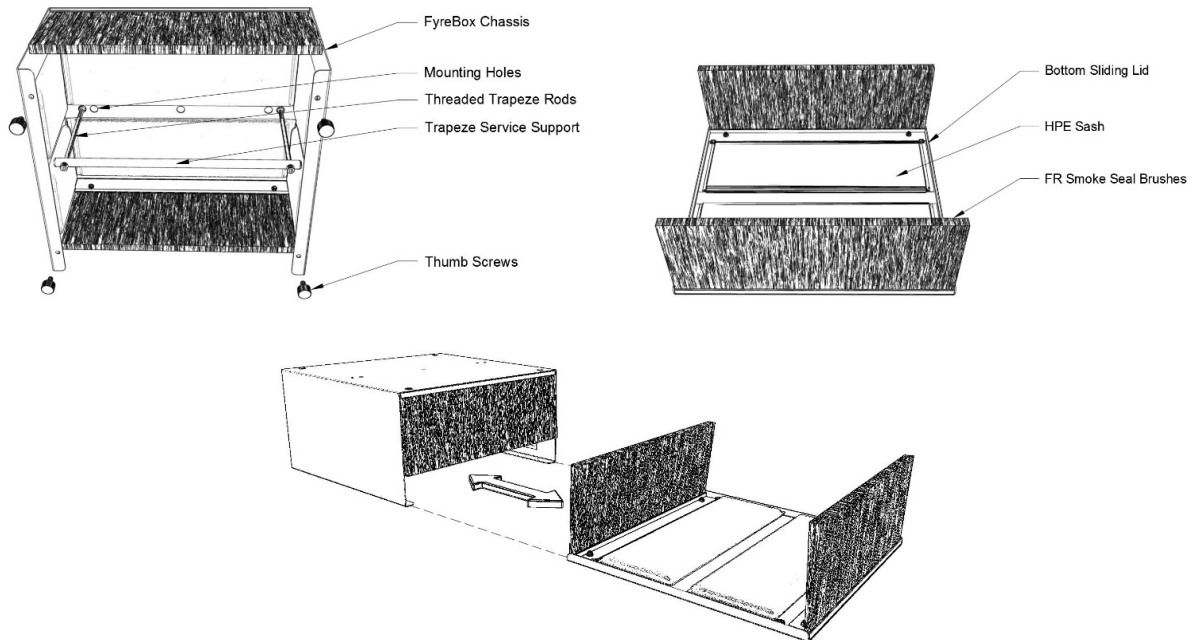


Thank you for purchasing the BOSS FyreBox Multi-Service Cable & Pipe Transit device. The BOSS Fyrebox provides the highest performing fire rating device for penetrations through fire walls and is ideal for apartment entry services and riser shafts, amongst other situations.

The BOSS FyreBox is tested and approved in Australia to AS/NZS 1530.4:2014 for approved use in Australia and NZ. When installed correctly the BOSS FyreBox will provide up to 2hrs fire rating with an FRL of -/120/120 on the full range of approved services. More information on tested and approved systems can be found at www.bossfire.com.au or by scanning on the QR code at the end of these instructions.



For Mounting Under a Soffit or Slab

1. Measure and mark the location of the proposed Fire Wall and mark the position where the FyreBox is to be mounted on the underside of the slab/soffit. Ensure that the FyreBox is centred at the Fire Wall, ie - ensure the centreline of FyreBox straddles the centreline of the Fire Wall. (Fig. 1)

2. Ensure there is adequate space on both sides of the Fire Wall, immediately in front and behind the FyreBox, to install cable or pipe hangers to the underside of the slab. It is important that all penetrating services are supported independently of the FyreBox.

3. Remove the four thumbscrews and slide the bottom lid out of the chassis. Add a 5mm bead of BOSS FireMastic-300 sealant to the top of the FyreBox to provide a fire seal between the FyreBox and the slab surface. Mount the chassis to the underside of the slab / soffit with suitable all-steel fire resistant mechanical fixings, through the mounting holes provided in the chassis. Ideal fasteners are 6.5mm masonry

anchors that do not contain plastics or alloys and are suitably rated for fire stopping installations. (Fig. 1)

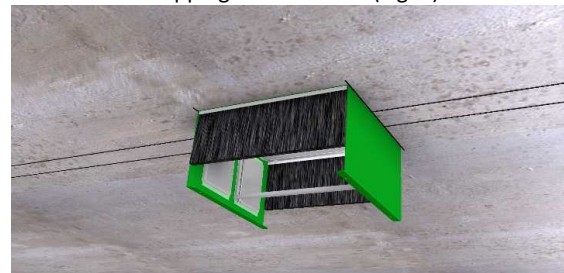


Fig. 1 – Mark wall location and install chassis

4. Install the services through the FyreBox, ensuring there is a gap of at least 20mm above flanges of the bottom lid. This will allow adequate room to install the lid later in the process. The optional Service Support Trapeze is provided to help with heavy services or a fully-loaded FyreBox. To install the trapeze, simply insert the threaded hanging rods through the bar and screw into the threaded fixings in the top of the FyreBox. This will help maintain clearance from the bottom to allow for easy lid installation.

5. Install the lid by resting it on the flanges & sliding it into place. The Smoke Brushes will shape themselves around the penetrating services and when closed, the Smoke Brushes can easily be tucked into place by hand. Secure the lid using the four thumb screws provided. (Fig. 2)

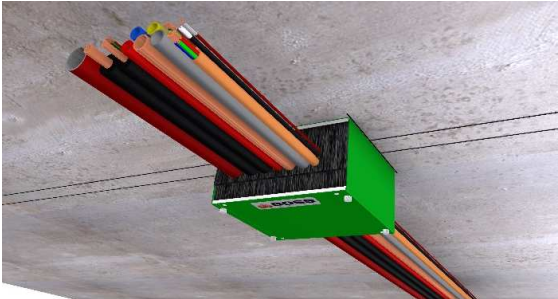


Fig. 2 – Install services and secure sliding lid

6. Install wall framing (studs and noggins) around the FyreBox. (Fig. 3) The FyreBox does not need to be attached to the wall framing.

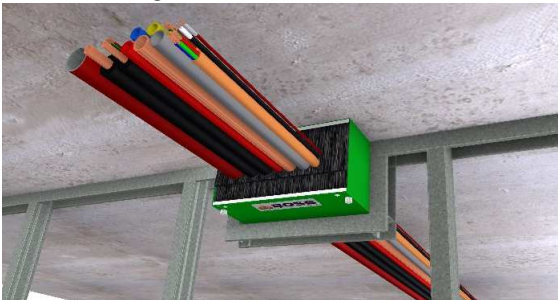


Fig. 3 – Install wall framing

7. Complete the wall lining installation. (Fig. 4)



Fig. 4 – Install wall linings

8. Mask the wall and FyreBox with tape if an aesthetic finish is required. Seal between the wall surfaces and perimeter of the FyreBox with a bead of **BOSS FireMastic-300** sealant. This bead does not need to be any larger than 20mm. (Fig. 5)



Fig. 5 – Seal around FyreBox

9. The insulation rating of all of the approved penetrating services can be provided to 120 minutes, including steel or copper pipes, by wrapping the services with **BOSS P40 MAK-Wrap** on both sides of the wall and securing with steel cable ties or wire. In this case, one layer of P40 MAK-Wrap is required, butted up to the Smoke Brushes. The P40 MAK-Wrap does not need to penetrate the FyreBox enclosure, and should extend along the services 300mm from the end of the FyreBox. (Fig. 6)



Fig. 6 – Insulate services if required

For Mounting Mid-Wall

Mid-wall installation is possible for new wall construction and for retrofitting to existing walls. For new walls, locate a nogging above the desired FyreBox location (Fig.7). Secure the chassis to the nogging with all-steel fasteners via the mounting holes. For existing walls, support the FyreBox in the required location via angle brackets, fixed to the wall surface only (Fig.8).

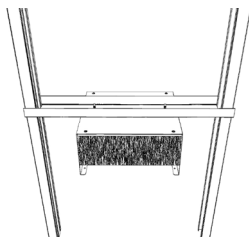


Fig. 7 - New mid-wall mount

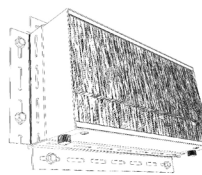


Fig. 8 - Existing mid-wall mount

Available from