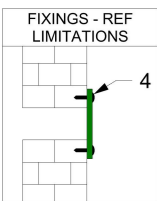
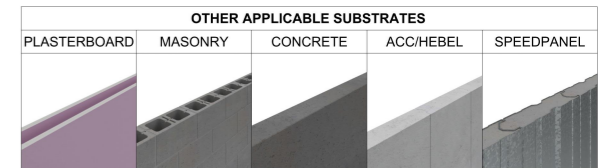
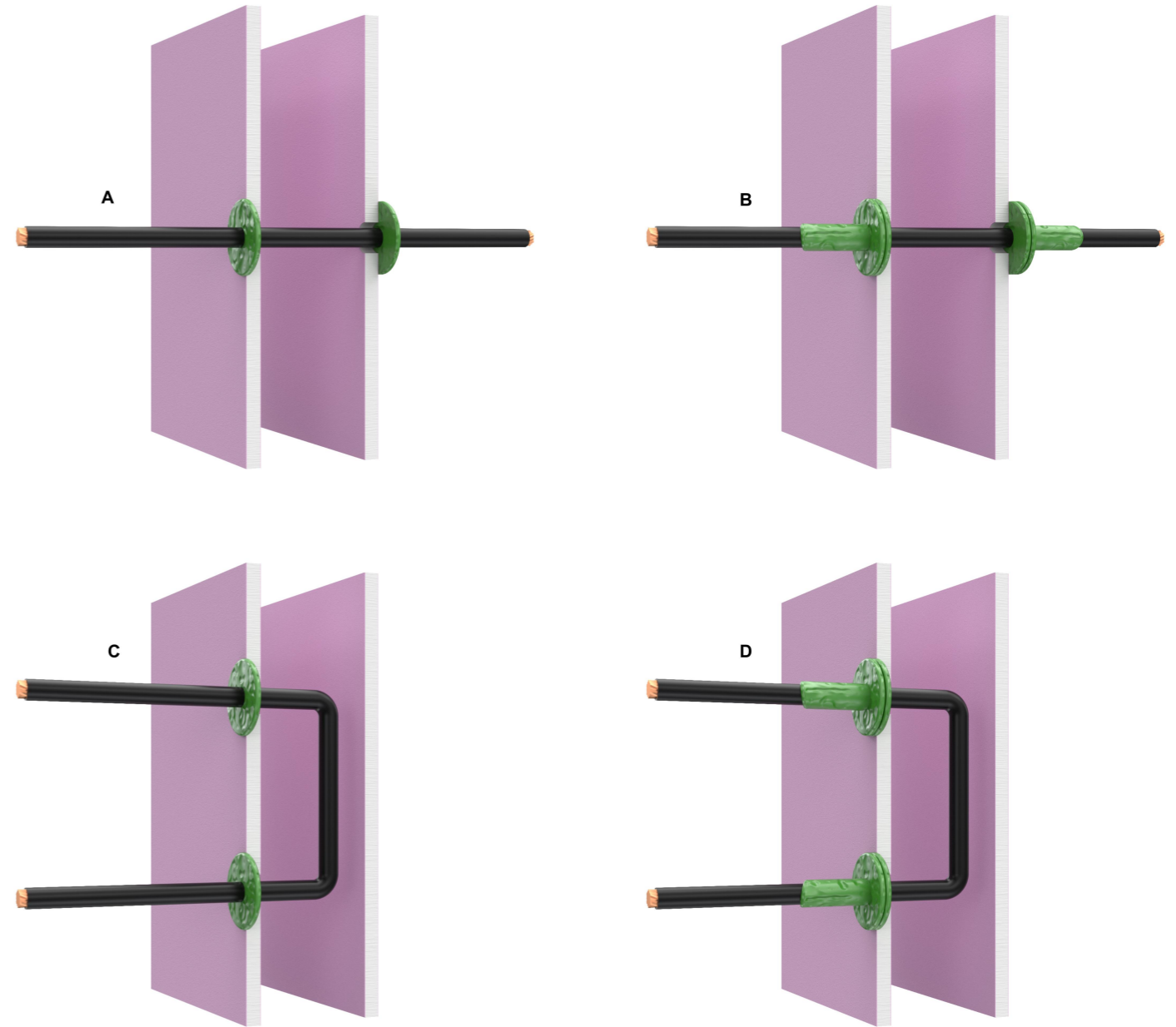
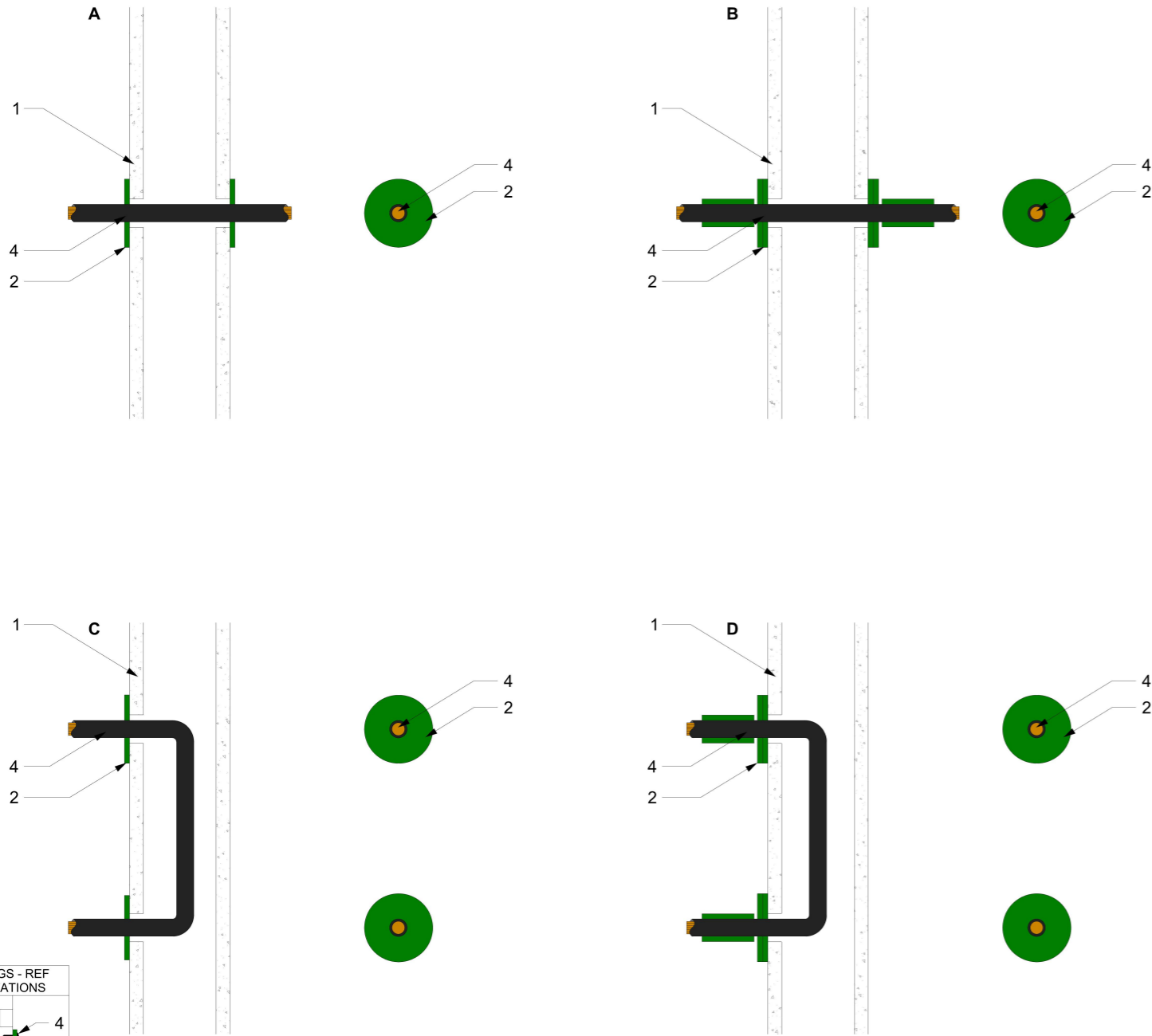


CONFIG A

CONFIG B



Component Schedule	Component Name	Primary Fire Stopping Product	Applicable Substrates	Min Substrate Thickness (If Applicable)	Applicable FRL	Service Specifications	Limitations
1 2 3 4	Wall (See Applicable Substrates) PenoPatch™ 60mm 12mm Nails or Screws depending on substrate Power Cable (See Service Specifications)	PenoPatch™ 60mm	Min 100mm Thick Walls: -FR Plasterboard / GIB -Concrete -Masonry -AAC / Hebel Walls with Build Up to Min 100mm: -Speedpanel & Korok -AAC / Hebel Build up options - 100mm clearance from perimeter of service: -BOSS Batt -FR Plasterboard (Edge to be sealed with 20mm deep sealant)	100mm	-/60/30 -/60/60 -/120/30 -/120/60	Aperture 25mm Dia - Use 60mm PenoPatch™: - Single PVC/PVC Sheathed 5mm x 1.5mm ² Power Cable (FRL -/60/30 Config A, FRL -/60/60 Config B) or - Single EPR/PO Sheathed 5mm x 1.5mm ² Power Cable (FRL -/60/30 Config A, FRL -/60/60 Config B) or - Single XLPE/EVA Sheathed 5mm x 1.5mm ² Power Cable (FRL -/120/60 Config A) or - Single PVC/PVC Sheathed 1mm x 95mm ² Power Cable (FRL -/120/30 Config A, FRL -/120/60 Config B) or - Single PVC/PVC Sheathed 1mm x 185mm ² Power Cable (FRL -/120/30 Config A, FRL -/120/60 Config B)	In masonry / concrete wall PenoPatch to be fixed using two masonry nails (min 12mm long). In AAC / Hebel, Speedpanel & Korok wall PenoPatch to be fixed using two metal screws (min 12mm long).
		Secondary Fire Stopping Product					
		Tertiary Fire Stopping Product					
<p>LIMITATION BOSS Fire & Safety Pty Ltd has provided the above technical information in good faith and to the best of its knowledge. This information was deemed to be correct at the time of publication. Should any data come to BOSS Fire & Safety's attention relating to the fire resistance or performance of the product described, BOSS Fire & Safety Pty Ltd reserve the right to amend this document or drawing. BOSS Fire & Safety strive to constantly improve and develop products so this information may change without notice. The information contained herein has been developed as a guide only and it does not constitute a guarantee of compliance of all applications. Each project and/or application may have specific requirements and you should investigate these carefully. Ensure that you have read and understood the appropriate certification relative to your needs, and ensure you seek acceptance from the Certifying Authority or compliance inspector before installation. For updates on the range of BOSS Fire® certification please contact BOSS Technical Services. +61 2 9531 8591 Copyright © 2020 BOSS Fire & Safety Pty Ltd. All rights reserved.</p>							



Sales & Technical	1300 502 677		
International	+61 2 9531 8591		
Web	bossfire.com		
Drawing Information:			
Category 1	Wall		
Category 2	Service Penetration		
Category 3	Power Cables		
Test Standard	AS1530.4: 2014/AS4072.1-2005		
Test Reference	FAS 190100		
Drawing Number	W-SP-POW-016		
Product DWG ID	PP-007		
Drawn By	EG	Rev	05
Date of Issue	01/07/2021		