



Mobile Whiteboards

- Thought Board
- Unity Board
- Focus Board



POTTER
INTERIOR SYSTEMS





Thought Board Mobile Whiteboard

Manufactured in New Zealand our pivoting double-sided whiteboards are extremely robust being mounted on a high quality, powder coated steel frame. The ultra-smooth enamel surface is stain and scratch resistant with low reflectivity. Perfect for hard working environments, the robust castor wheels allow easy mobility between spaces.

Features

- Pivoting double-sided whiteboard on sturdy steel frame
- Premium porcelain on steel surface
- Use with magnetic products + accessories
- Easy glide wheels with locking mechanism
- Durable and resistant to scratches and stains
- Cradle to cradle certified porcelain - no VOCs
- 25 year surface guarantee

Finishing options

- Available in a range of standard sizes

Accessories

- Cleaning fluid supplied



Flatline Whiteboard

Perfect for everyday use our premium quality porcelain on steel whiteboards provide the essential strength and longevity you need. The ultra-smooth surface is stain and scratch resistant and has low reflectivity.

Our Flat Line frame features clean lines and is low profile with moulded corners. This frame allows for easy installation and relocation of boards using our unique hidden fixing clips and installation method.

Features

- Stock held in standard sizes or made to order in customisable height and width options
- Premium porcelain on steel surface
- Use with magnetic products + accessories
- Durable and resistant to scratches and stains
- Low reflectivity for use with a projector screen
- Solid aluminium backing
- Cradle to cradle certified porcelain - no VOCs
- 25 year surface guarantee

Finishing Options

- Anodised aluminium frame
- Can be powder coated to colour of your choice as an optional extra
- Corner mitred option available

Accessories

- Aluminium pen shelf in anodised finish
- Hidden easy to install wall fixings supplied



Unity Mobile Whiteboard

Built to withstand tough environments, our Z shape base makes this one of the strongest frames available with a double sided porcelain-on-steel whiteboard.

Our robust Unity whiteboards are perfect for hard-working environments such as classrooms, training facilities and offices, where our customers have found this unit is a reliable long term investment.

Features

- Industrial size wheels with locking mechanism
- Low maintenance, welded frame steel frame
- The Z shaped base allows convenient stacking for multiple units
- Non pivoting whiteboard with additional pinboard surface included below
- Use with magnetic products + accessories
- Durable and resistant to scratches and stains
- 25 year surface guarantee

Finishing Options

- Available in a range of standard sizes
- Custom sizes and finishes available
- Choose from a selection of standard frame and fabric colours

* 20x BURPEES
* 10x MOUNTAIN CLIMBERS
* 10x SITUPS
* 15x CRUNCHES

CUSTOM MADE SOLUTIONS
FAVOURERD BY DESIGNERS

We offer two standard fabric ranges. The long lasting fabrics are extremely durable and suitable for use in commercial, hospitality, education and other hard-working environments.

Ranger



Breeze



Natural



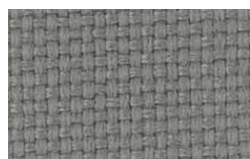
Kowhai



Orange



Silver Grey



Classic Silver



Horizon



Fairway



Sterling/Citrus



Royal Capri



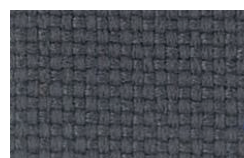
Antigua



Red



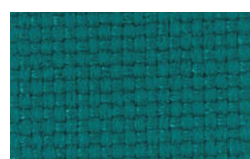
Charcoal



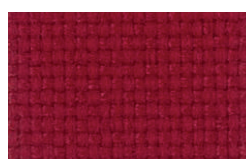
Storm



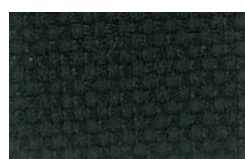
Solar Blue



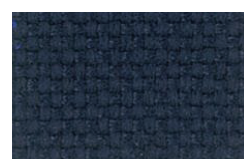
Amarillo/Vegas



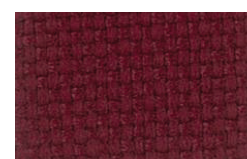
Domingo



Black



Charade Navy



Bordeaux

Quantum



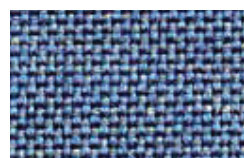
Capri



Gunsmoke



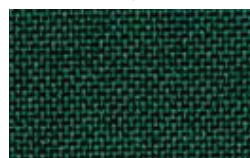
Gallery



Cornflower



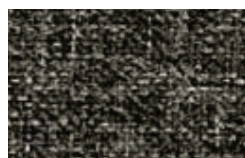
Claret



Hunter



Riviera



Nebula



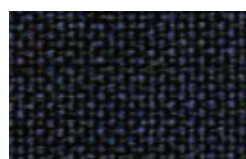
Navy



Pebble Grey



Storm



Stonewash



Black



Poppy



Venus