

**ecooustic**<sup>®</sup> panel print: META

Available from

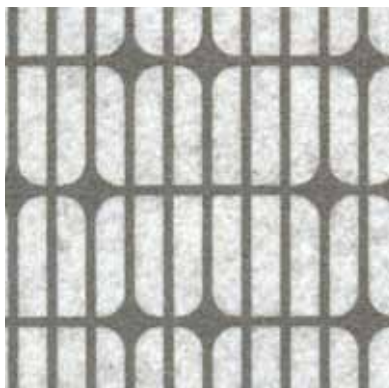


INSTYLE

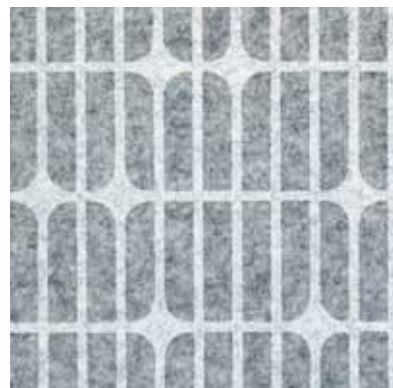
# ecoustic<sup>®</sup> panel print: META



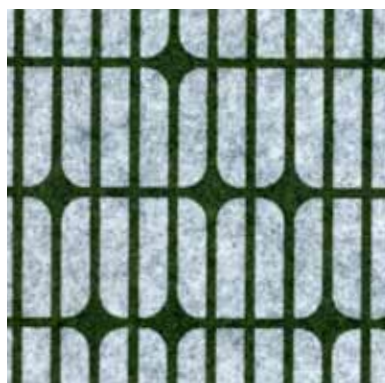
META Ash on White



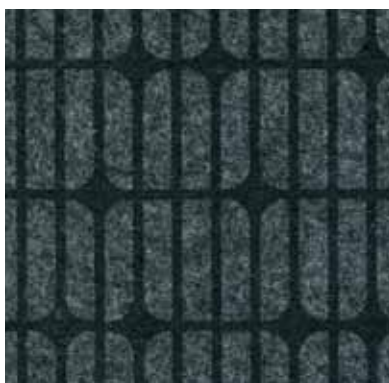
META Stone on Natural



META White on Light Grey



META Olive on Light Grey



META Black on Charcoal

Patterns shown are not to scale  
Product may vary in colour due to the nature of the media  
Please refer to website for current colour range



# ecoustic<sup>®</sup> panel print: META



COMPOSITION	100% PET (>50% recycled PET)
THICKNESS	8mm (stock item) 13.5mm*, 25mm*, 50mm* 12mm Ecoustic <sup>®</sup> Screen* *(minimums apply)
WEIGHT / DENSITY	Refer to specific Ecoustic <sup>®</sup> Panel + Screen information
PRINT DIMENSIONS	Panel: 1190 x 2700mm approx. Screen: 2400 x 1200mm approx.* *(minimums apply)
PATTERN REPEAT	H: 600mm V: 588mm META is railroaded for Ecoustic <sup>®</sup> Screen
LIGHTFASTNESS ISO 105-B02	> 6
FIRE RATINGS	AS/NZS 1530.3, AS/ISO 9705 Group 1-S GB 8624-2012 Grade B1 Refer to specific Ecoustic <sup>®</sup> Panel + Screen information
ACOUSTIC AS/ISO 354	NRC 0.30 - 1.00 Depending on thickness, refer to specific Ecoustic <sup>®</sup> Panel + Screen information
APPLICATION	screen, wall and ceiling panel
ORIGIN	Australia

## BENEFITS

**Improved Sound Absorption:** Ecoustic<sup>®</sup> Panel + Screen can absorb 30%, 50%, 80% or 100% of sound (depending on the panel thickness) when the panel is directly fixed to a wall.

**Improved Pinability:** Ecoustic<sup>®</sup> Panel + Screen features an improved pinability compared to similar panel products.

**Designed for the Environment:** Ecoustic<sup>®</sup> is made from over 50% recycled PET. Ecoustic<sup>®</sup> Panel is designed to optimally fit with walls and workstations, which results in less labour and materials. Easy to disassemble and separate into the appropriate recycling systems, Ecoustic<sup>®</sup> can be recycled.

**Low VOC + Greentag Level A Certification:** Ecoustic<sup>®</sup> is certified low-VOC and is Greentag Level A Certified.



**Green Star:** Ecoustic<sup>®</sup> is Greentag Level A Certified and can achieve maximum Green Star points.

**LEED:** 50% post consumer content contributes to LEED MR Credit 4 Recycled Content.

**Lightweight, Easy to Handle + Install:** Ecoustic<sup>®</sup> is an intelligent alternative to traditional panels composed of multiple materials such as particle board, fabric, foam and adhesive. Compared to traditional panels, the semi rigid Ecoustic<sup>®</sup> Panel + Screen is lower in weight, easier to handle and results in reduced transportation costs. Ecoustic<sup>®</sup> Panel + Screen can be trimmed and installed without the need for additional finishes, which reduces labour and material costs. Installation guidelines and care instructions are available on our website.

**Edging Profile:** Natural anodised aluminium edging lengths at 2750mm (+/- 5mm) with counter sunk holes are available for all Ecoustic<sup>®</sup> Panel thicknesses.