

# E SERIES 132

---

## SUITE OVERVIEW

E Series 132 provides an edgeline glazing and twin-glazing design with clean lines to provide a clean look to your partition system. E Series 132 gives a standard detail of 132mm x 25mm, 132mm x 35mm or 132mm x 50mm.

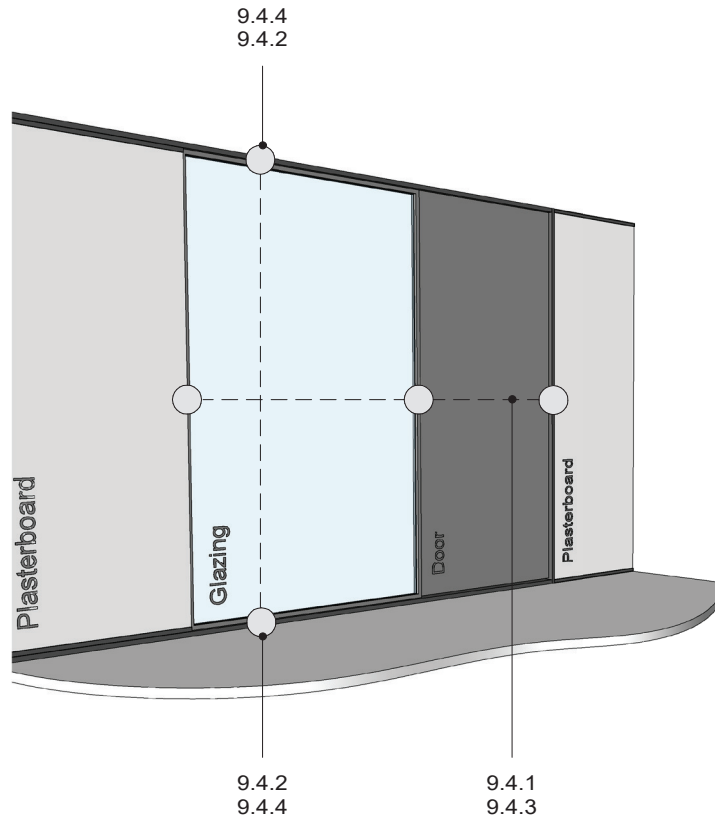
- » E Series 132 has the following features:
- » Can accommodate glass thicknesses between 6mm and 13mm
- » Door thicknesses of 35mm – 50mm can be used
- » Standard wall size based around 92mm steel stud with one layer of 13mm plaster board on each side

## TECHNICAL SERVICES + SPECIFICATION

Technical advice is available from our experienced team. Our innovation in this area sets us apart. If you have a unique design challenge that requires a new take on aluminium partitioning, contact us to discover how we can best assist you via our company information page for your closest branch, **0800 POTTERS** or email [specsupport@potters.co.nz](mailto:specsupport@potters.co.nz)

The Potter Interior Systems product catalogue is hosted on [www.potters.co.nz](http://www.potters.co.nz). CAD details are either individual components or fully assembled details for convenient transfer to specifiers drawings. The file formats available for download are .DWG, .DXF, .PDF and Autodesk Revit .RVT

Specifications are also available online with Masterspec branded section 5211PP POTTER ALUMINIUM INTERNAL PARTITIONS



TIPS FOR ARCHITECTS AND DESIGNERS:  
 TYPICAL FOR ALL SUITES

- 6MM - 13MM MAXIMUM LAMINATED GLASS SIZE
- 13MM PLASTERBOARD ONLY
- 105MM PROFILES = 64MM STUD
- 132MM PROFILES = 92MM STUD
- SD = SINGLE/DOUBLE ACOUSTIC WALL LININGS
- DD = DOUBLE/DOUBLE ACOUSTIC WALL LININGS
- FOR SOUND TRANSMISSION CLASS POINTS (STC) REFER TO THE POTTERS WEBSITE [WWW.POTTERS.CO.NZ](http://WWW.POTTERS.CO.NZ) IN THE "PARTITIONING" SECTION

**POTTER ALUMINIUM SYSTEMS**  
**E SERIES 132 - DETAIL REFERENCES**

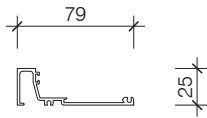
**9.3.1**  
 SHEET

SCALE

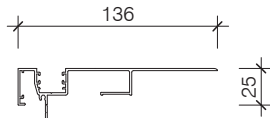
A 01/04/2020  
 ISSUED DATE

0800 POTTER (0800 768 837) [WWW.POTTERS.CO.NZ](http://WWW.POTTERS.CO.NZ)  
 SUBJECT TO CHANGE WITHOUT NOTICE

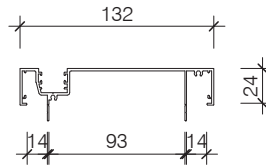




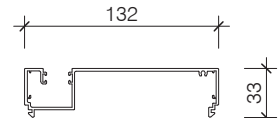
**PAS033**  
 105 EDGE GLAZING  
 FRAME



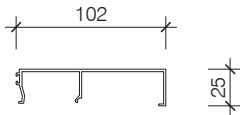
**PAS313/E**  
 ADJUSTABLE MULTI  
 TRACK E



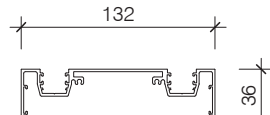
**PAS332**  
 132 OFFSET  
 GLAZING FRAME



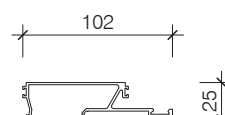
**PAS332/D**  
 132 DEEP POCKET  
 GLAZING FRAME



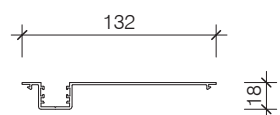
**PAS334**  
 132 EDGE GLAZING  
 BEAD



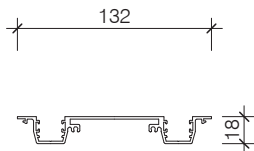
**PAS335**  
 132 TWIN GLAZING  
 MULLION FRAME



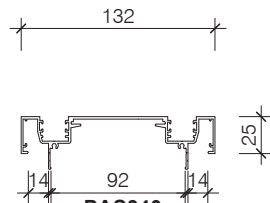
**PAS336**  
 132 TWIN GLAZING  
 BEAD



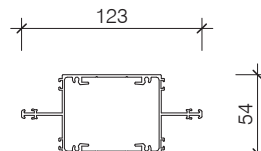
**PAS338**  
 132 OFFSET GLAZE  
 SNAP IN POCKET



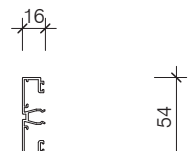
**PAS339**  
 132 TWIN GLAZE  
 SNAP IN POCKET



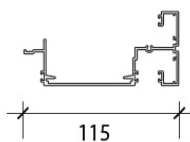
**PAS340**  
 132 TWIN GLAZING  
 FRAME



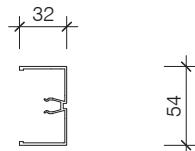
**PAS341**  
 TWIN GLAZING  
 TRANSOM



**PAS342**  
 TWIN GLAZING  
 TRANSOM BEAD



**PAS343**  
 TWO PIECE TWIN  
 GLAZE MULLION



**PAS344**  
 132 SINGLE GLAZING  
 TRANSOM BEAD

## POTTER ALUMINIUM SYSTEMS E SERIES 132 - SUITE PROFILES

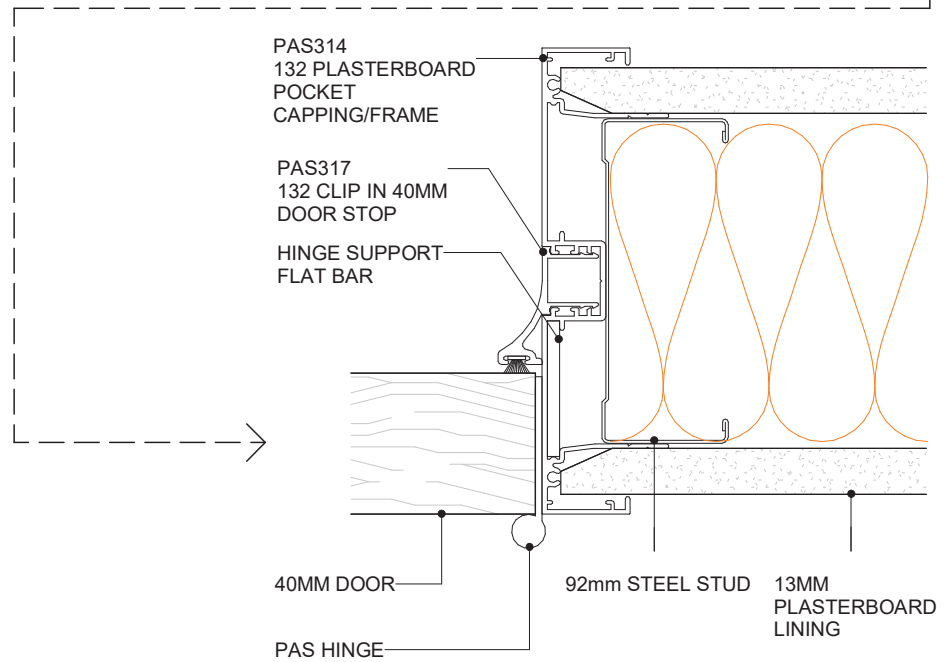
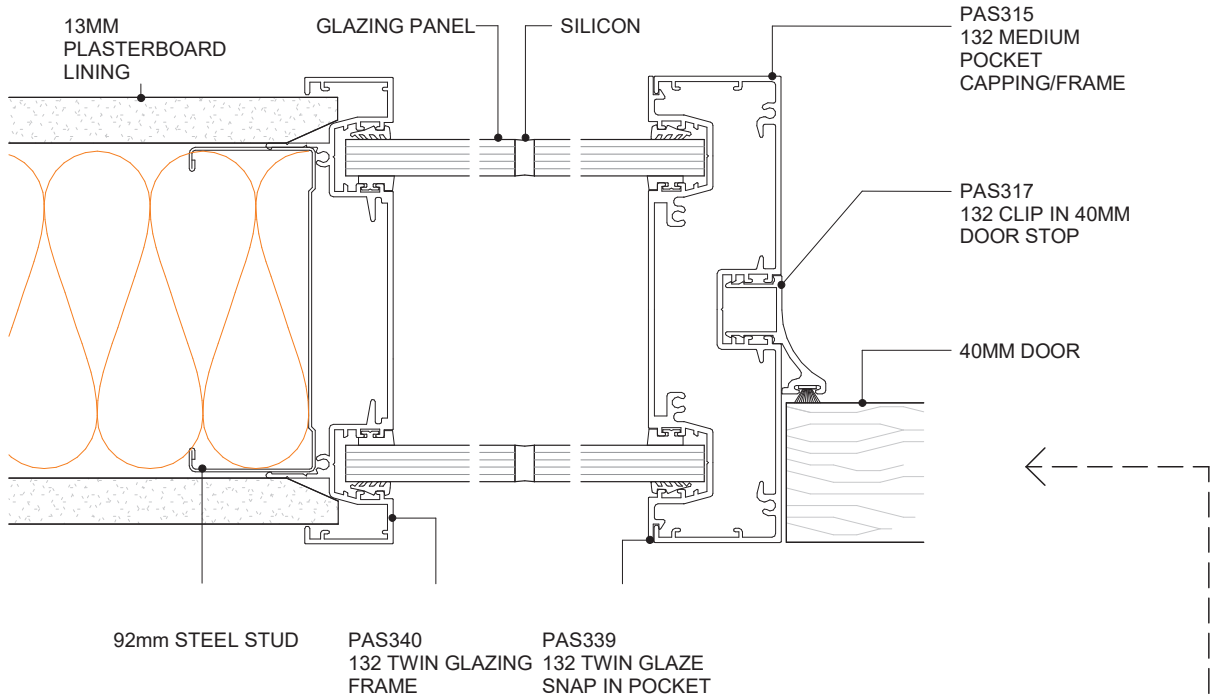
**9.3.2**  
 SHEET

1:5@A4  
 SCALE

A 01/04/2020  
 ISSUED DATE

0800 POTTER (0800 768 837) WWW.POTTERS.CO.NZ  
 SUBJECT TO CHANGE WITHOUT NOTICE





**POTTER ALUMINIUM SYSTEMS**  
**E SERIES 132 - 92MM - MULLION & DOOR WALL SECTION**  
**PLAN VIEW**

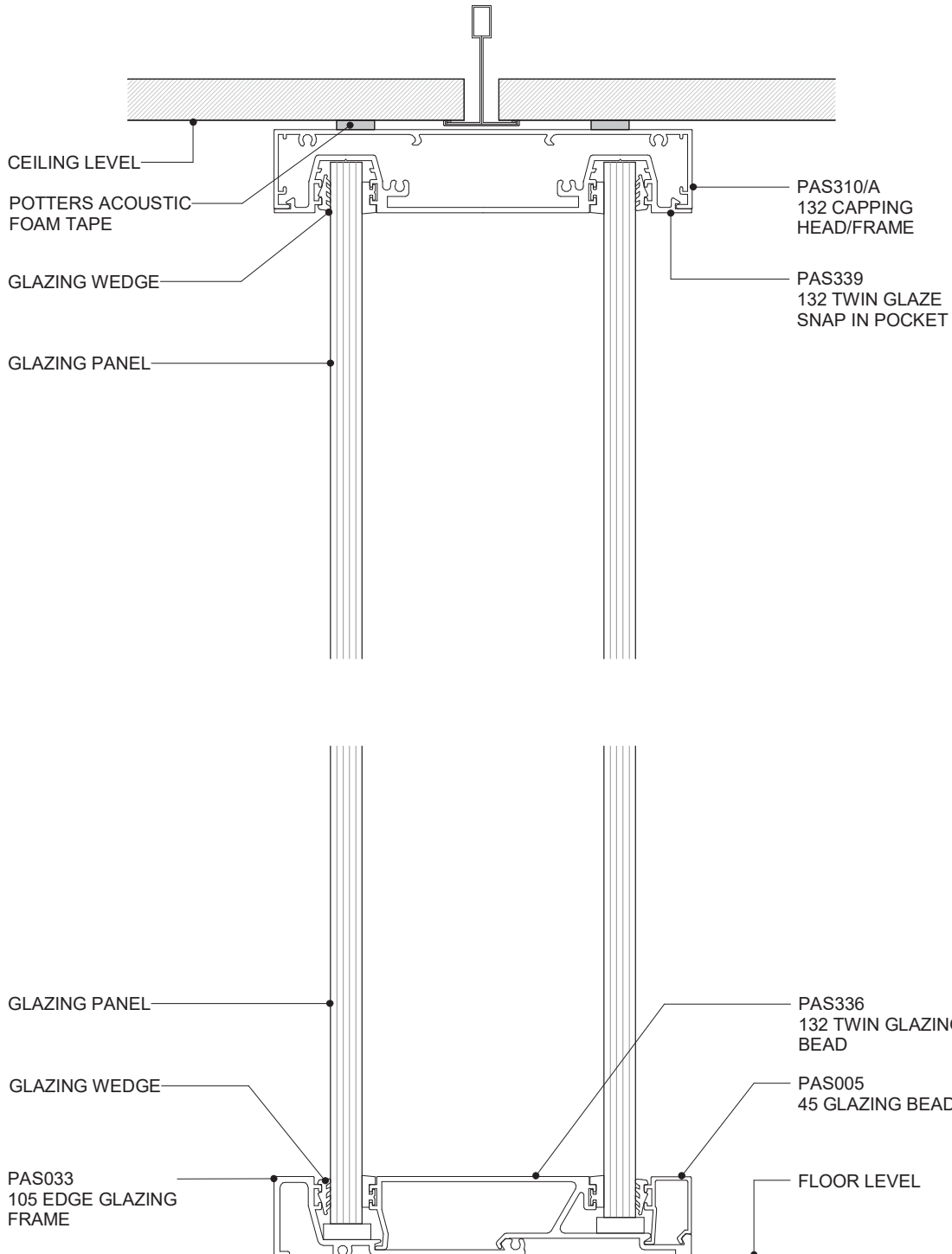
**9.4.1**  
SHEET

1:2@A4  
SCALE

A 01/04/2020  
ISSUED DATE

0800 POTTER (0800 768 837) WWW.POTTERS.CO.NZ  
SUBJECT TO CHANGE WITHOUT NOTICE

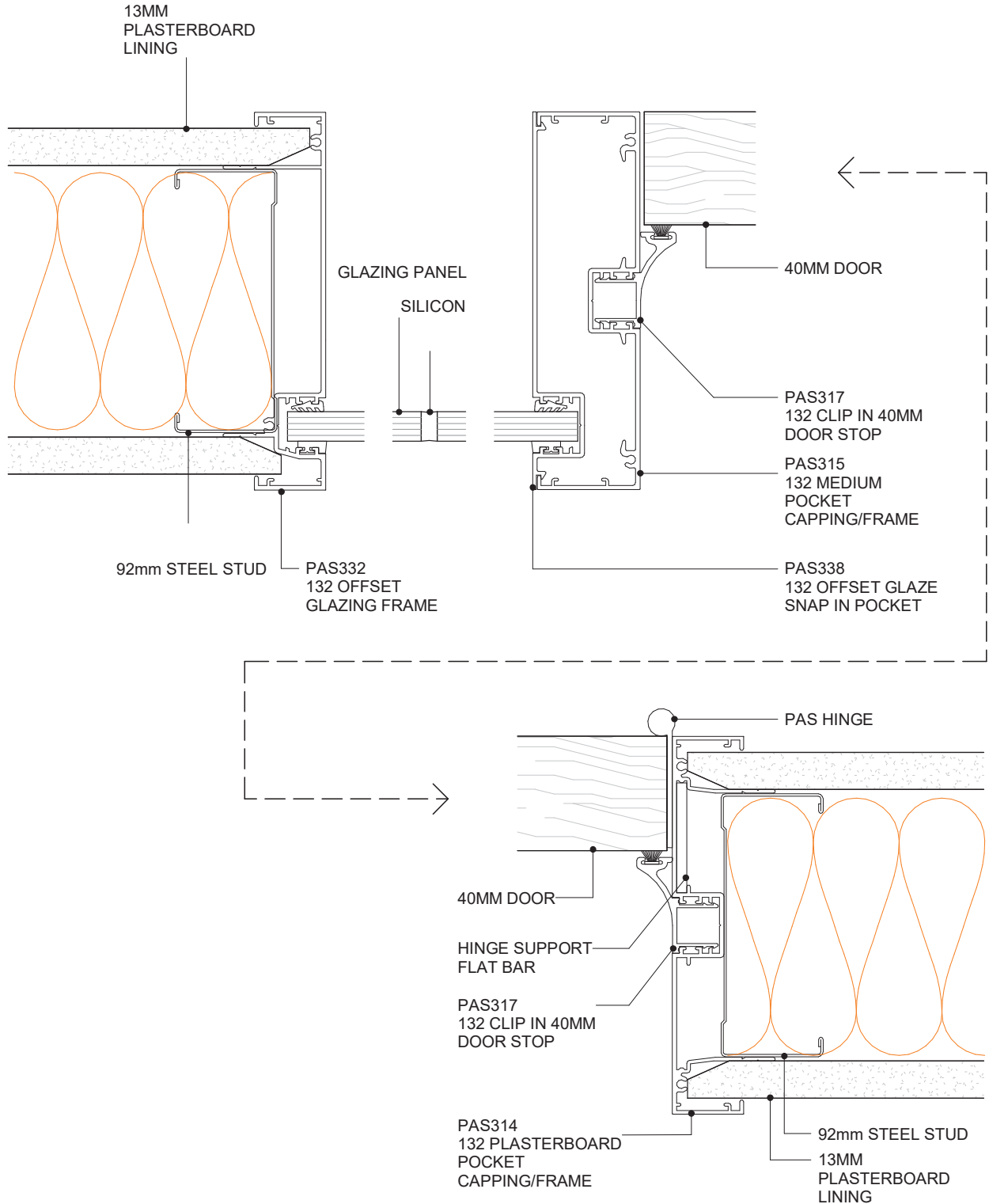



**POTTER ALUMINIUM SYSTEMS  
 E SERIES 132 - TWIN GLAZING WALL**
**CROSS SECTION**
**9.4.2**  
 SHEET

 1:2@A4  
 SCALE

 A 01/04/2020  
 ISSUED DATE

 0800 POTTER (0800 768 837) WWW.POTTERS.CO.NZ  
 SUBJECT TO CHANGE WITHOUT NOTICE

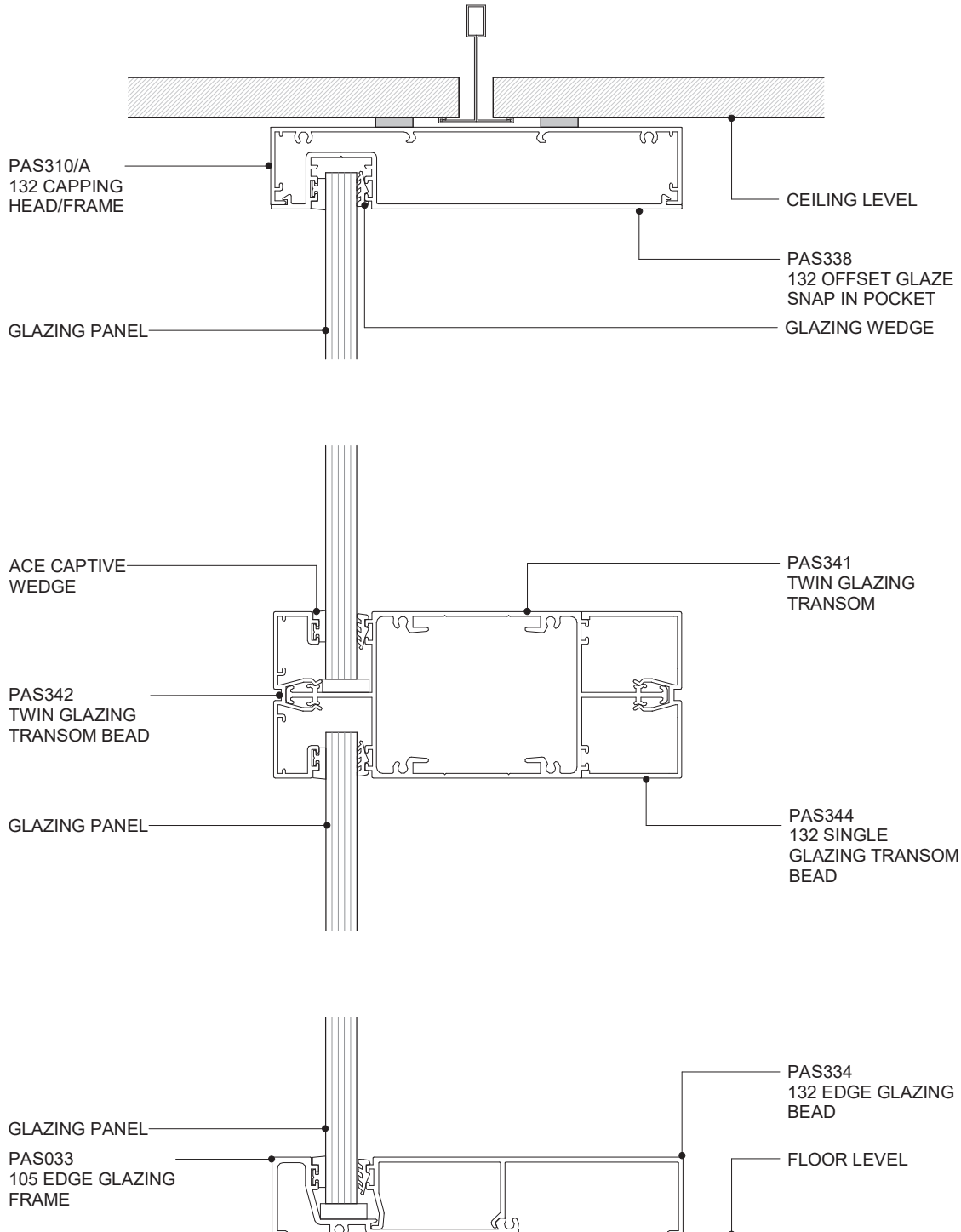
E SERIES 132

**POTTER ALUMINIUM SYSTEMS**  
**E SERIES 132 - 92MM MULLION & DOOR WALL**  
**PLAN VIEW**
**9.4.3**  
 SHEET

 1:2@A4  
 SCALE

 A 01/04/2020  
 ISSUED DATE

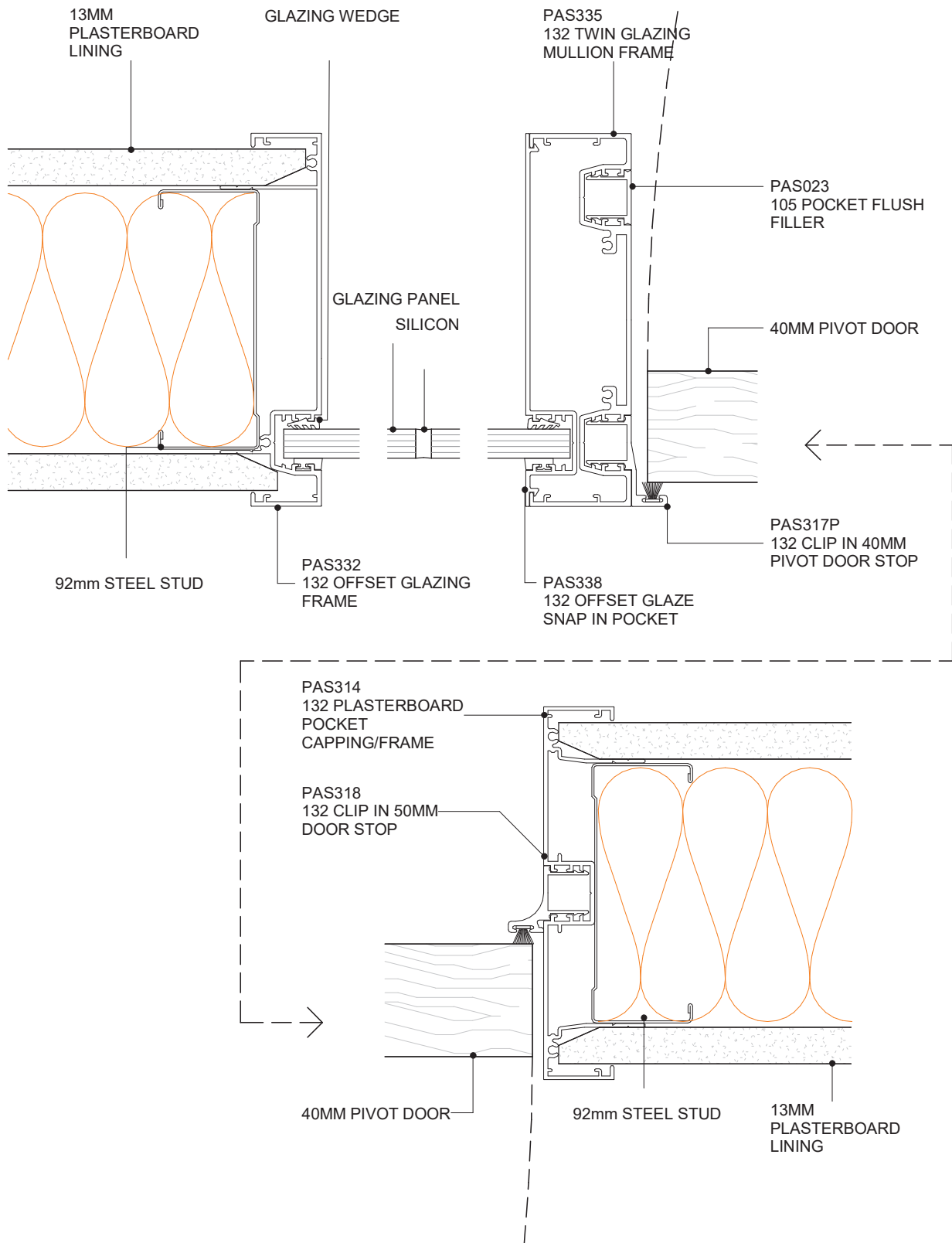
 0800 POTTER (0800 768 837) WWW.POTTERS.CO.NZ  
 SUBJECT TO CHANGE WITHOUT NOTICE



**POTTER ALUMINIUM SYSTEMS  
E SERIES 132 - LARGE GLAZING**
**CROSS SECTION**
**9.4.4**  
SHEET

 1:2@A4  
SCALE

 A 01/04/2020  
ISSUED DATE

 0800 POTTER (0800 768 837) WWW.POTTERS.CO.NZ  
SUBJECT TO CHANGE WITHOUT NOTICE

E SERIES 132

**POTTER ALUMINIUM SYSTEMS**  
**E SERIES 132 - 92MM - LARGE MULLION & PIVOT DOOR WALL**  
**PLAN VIEW**

**9.4.5**  
SHEET

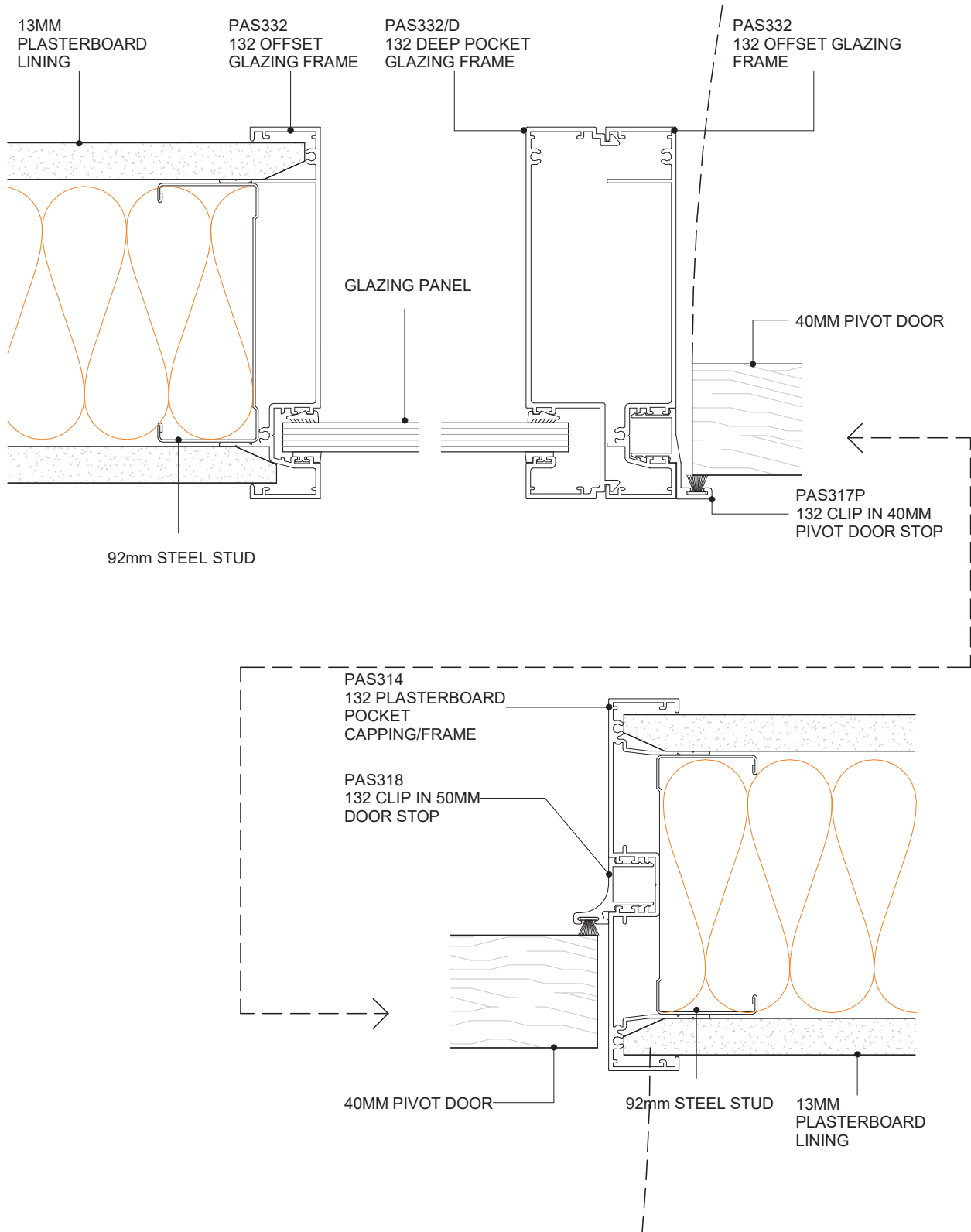
1:2@A4  
SCALE

A 01/04/2020  
ISSUED DATE

0800 POTTER (0800 768 837) WWW.POTTERS.CO.NZ  
SUBJECT TO CHANGE WITHOUT NOTICE







E SERIES 132

**POTTER ALUMINIUM SYSTEMS**  
**E SERIES 132 - 92MM - LARGE MULLION & PIVOT DOOR WALL**  
**PLAN VIEW**

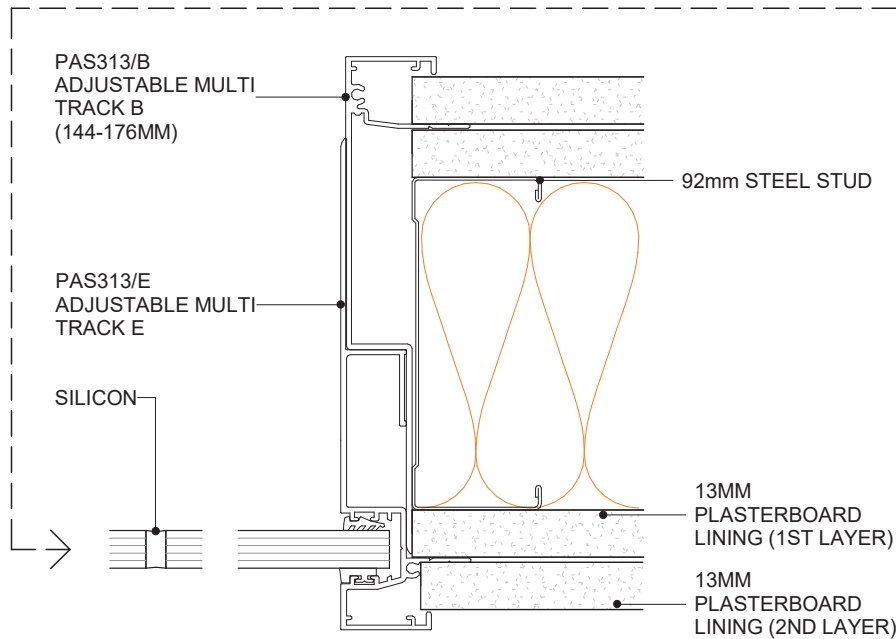
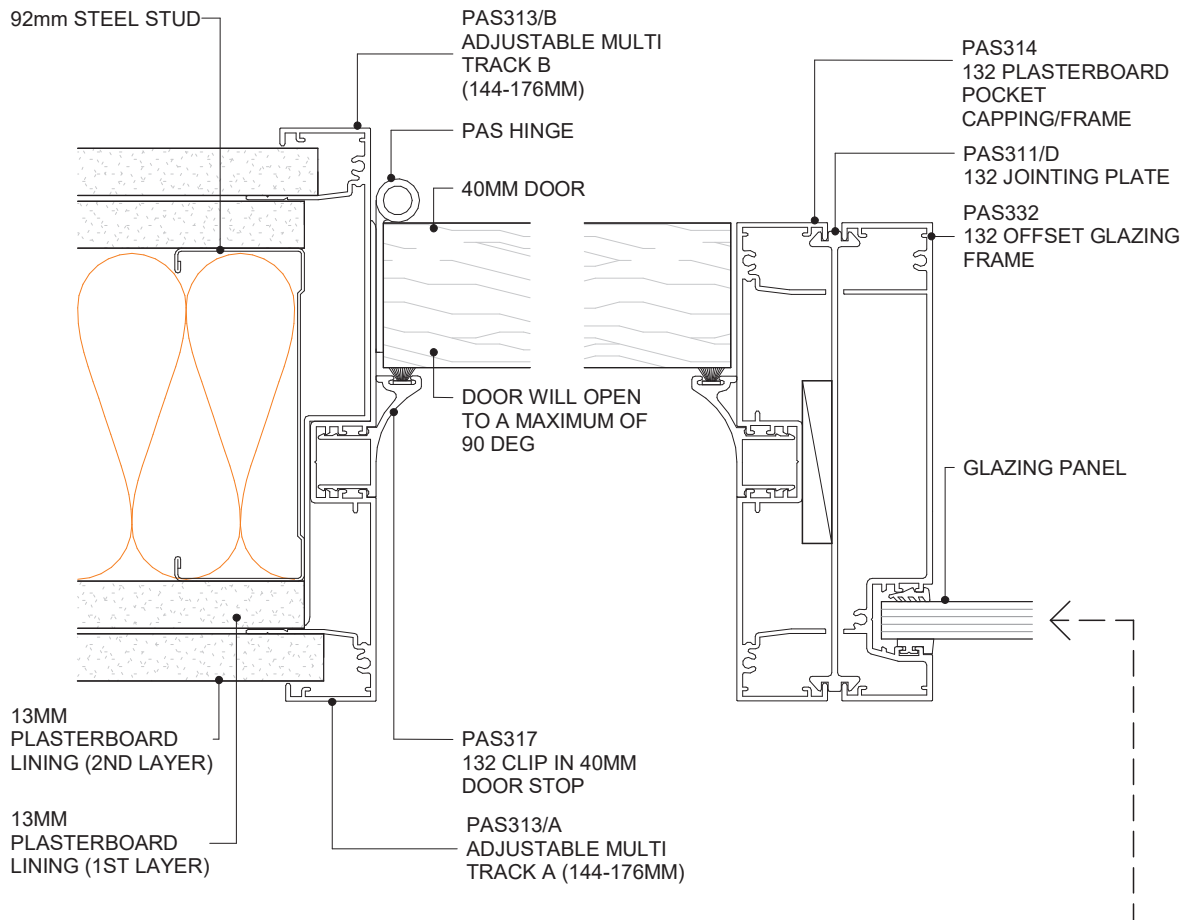
**9.4.6**  
 SHEET

1:2@A4  
 SCALE

A 01/04/2020  
 ISSUED DATE

0800 POTTER (0800 768 837) WWW.POTTERS.CO.NZ  
 SUBJECT TO CHANGE WITHOUT NOTICE





**POTTER ALUMINIUM SYSTEMS**  
**E SERIES 132 - 92MM - MULTI-LAYER DOOR DETAIL WITH OFFSET**  
**SIDELIGHT (4 LAYERS)**  
**PLAN VIEW**

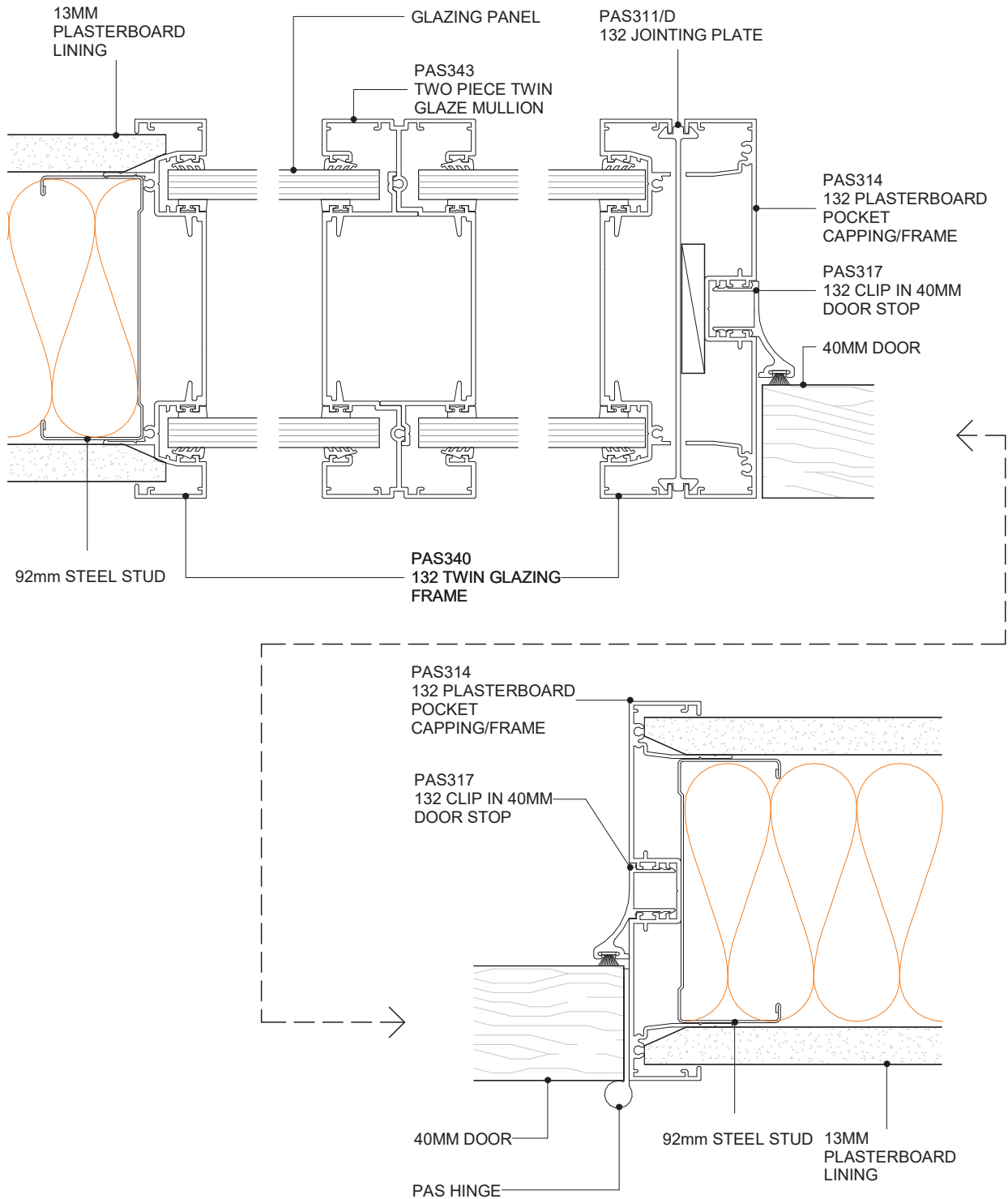
**9.4.7**  
SHEET

1:2@A4  
SCALE

A 01/04/2020  
ISSUED DATE

0800 POTTER (0800 768 837) WWW.POTTERS.CO.NZ  
SUBJECT TO CHANGE WITHOUT NOTICE





**POTTER ALUMINIUM SYSTEMS**  
**E SERIES 132 - 92MM - TWIN GLAZING MULLION & DOOR WALL SECTION**  
**PLAN VIEW**

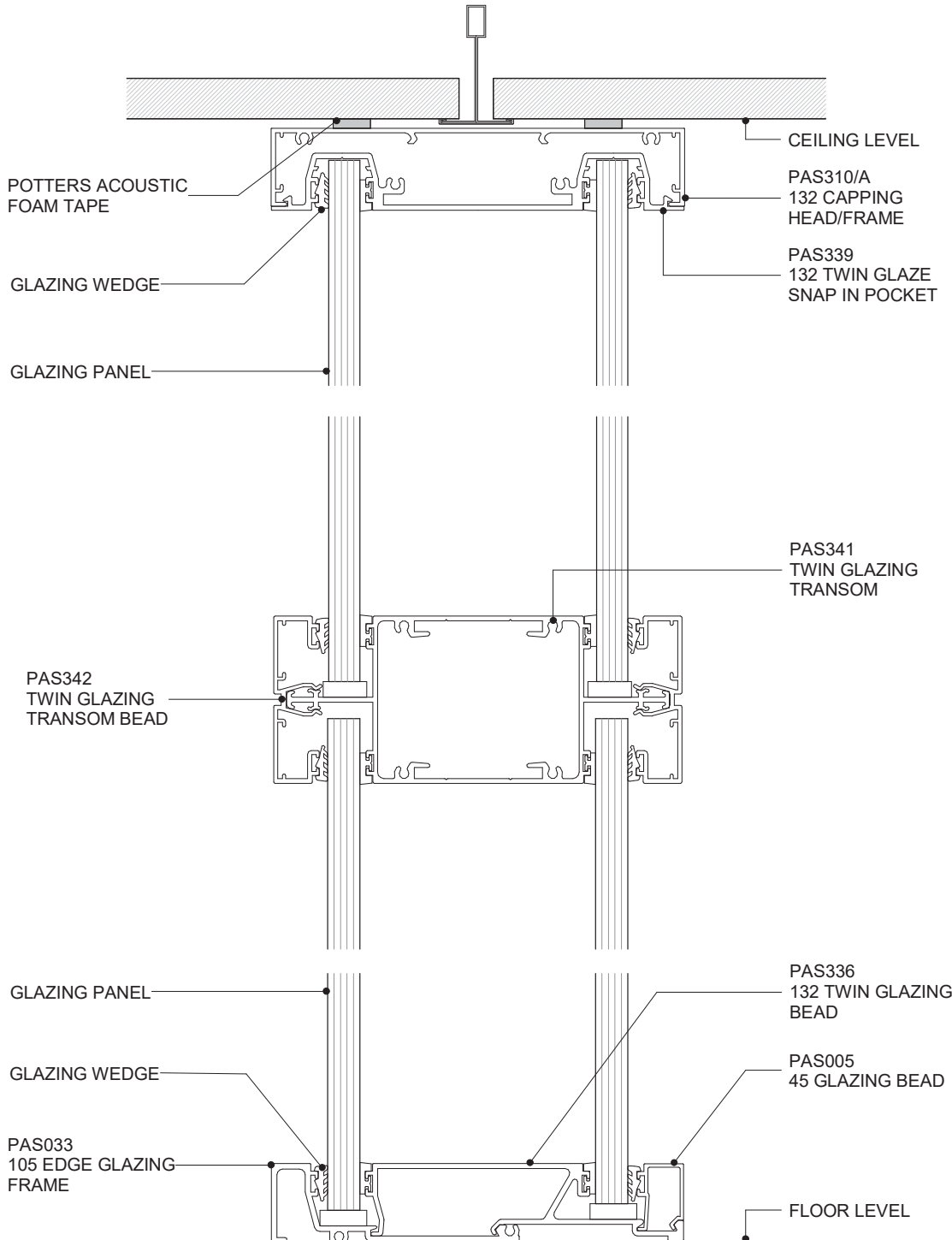
**9.4.8**  
SHEET

1:2@A4  
SCALE

A 01/04/2020  
ISSUED DATE

0800 POTTER (0800 768 837) WWW.POTTERS.CO.NZ  
SUBJECT TO CHANGE WITHOUT NOTICE





E SERIES 132

**POTTER ALUMINIUM SYSTEMS**  
**E SERIES 132 - TWIN GLAZING WALL TRANSOM**  
**CROSS SECTION**

**9.4.9**  
 SHEET

1:2@A4  
 SCALE

A 01/04/2020  
 ISSUED DATE

0800 POTTER (0800 768 837) WWW.POTTERS.CO.NZ  
 SUBJECT TO CHANGE WITHOUT NOTICE

