

# BOSS Batts

*High density coated mineral fibre board used for fire containment and service penetrations*  
*Approved to AS1530.4: 2014 & AS4072.1-2005*



## *Technical Data Sheet*

*Edition 4*

*Published: September 2021*

*The ultimate easy to use fire rated cavity barrier...*

**BOSS Fire & Safety Pty Ltd**

**AU:** 1300 50 2677

**NZ:** 0800 50 2677

**W:** bossfire.com

Distributed By  
**POTTER**  
INTERIOR SYSTEMS

www.potters.co.nz  
0800 POTTERS | info@potters.co.nz  
Auckland, Wellington + Christchurch

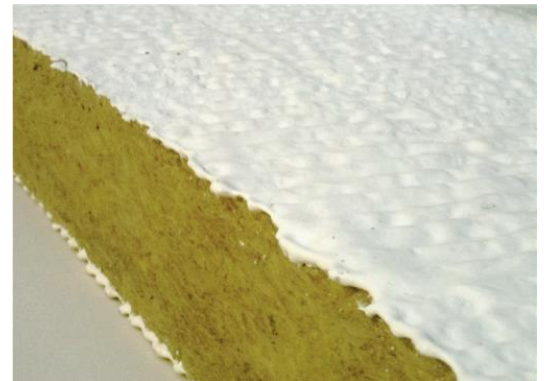
## KEY BENEFITS

- Low cost & highly efficient method of fire stopping
- Provides up to a -/240/180 FRL
- Long life and easy storage
- Suitable for large openings in floor and walls
- Easily retrofitted around existing services
- Approved in conjunction with a wide range of plumbing, electrical and HVAC services
- Up to Rw50 sound reduction
- Used in conjunction with many other firestopping products in the BOSS range

## INTRODUCTION

BOSS Batts are designed to provide simple and effective compartmentalisation and fire stopping in walls and floors.

BOSS Batts consist of high-density mineral fibre batt with an ablative fire resistant coating which can be used in conjunction with other high performance BOSS fire protection products to provide excellent integrity, thermal and acoustic insulation. The BOSS Batts prevent the passage of fire between compartment walls and floors whilst still allowing the insulation of services. BOSS Batts offer undoubtedly a cost-effective and simplest solution to cavity barriers, sealing wall and floor penetrations for up to FRL -/240/180.



They are a lightweight mineral fibre board that can be easily cut to size on site for simple friction fit applications. Simply push it in to place to fit the aperture and seal the perimeter with FireMastic-300™ fire rated sealant or our specially designed Ablative Coating for bonding Batts to Substrates. For higher insulation performance on services the addition of BOSS products such as P40-MAK Wrap or Thermal Defence Wrap may be used.

## APPLICATIONS

BOSS Batts are suitable for use in any building which has single or multiple services penetrating fire rated compartment walls and floors.

Typical installations are:

- Apartments and Residential
- Retail stores and shopping centres
- Commercial buildings
- Telecommunications & Data Centres
- Power stations
- Factories and industrial applications
- Office fit-outs

## PHYSICAL SPECIFICATION

<b>Approvals:</b>	AS1530.4: 2014 & AS4072.1-2005
<b>Areas of use:</b>	Internal
<b>Description:</b>	FR Mineral Fibre batt Density: 140-160kg/3 Thickness: 50mm Coating: FR acrylic Ablative Coating 1mm nominal wet film, both sides
<b>Dimensions:</b>	1200mm x 600mm x 50mm
<b>Fire Integrity:</b>	Up to 4 hours
<b>Insulation:</b>	Up to 120 mins

**For detailed performance information refer to Section - Performance Specification beginning on page 3.**

## PERFORMANCE SPECIFICATIONS

BOSS Batts has a wide variety of approvals including AS1530.4: 2014 & AS4072.1-2005. Approved applications include firestopping blank openings, linear gap seals a wide variety of service penetrations from plumbing, electrical and HVAC trades. BOSS Batts are most commonly used as a system in conjunction with a suite of BOSS Fire products such as FireMastic-300™, P40-MAK Wrap, MaxiCollars™, UniWrap™, BOSS Fire® Transit Box, FireSilicone-EMA™ & Thermal Defence Wrap. Please refer to the further tables contained in this document for specific performance information relevant to each various application.

### IMPORTANT:

**In order to ensure performance and compliance, passive firestopping products must be installed in accordance with the test evidence, manufacturer's specifications or be the subject of a performance solution.**

**Each project and/or application may have specific requirements and you should investigate these carefully.**

**Ensure that you read and understand the appropriate certification and how it relates to your specific construction details, and ensure you seek acceptance from the Certifying Authority or compliance inspector before installation.**

**Ensure your installation is carried out in accordance with the test certification, manufacturer's instructions, and in accordance with the relevant local building regulations, National Construction Code or Building Code.**

**For updates on the range of BOSS Fire® certification please contact BOSS Technical Services. +612 9531 8591 OR [info@bossfire.com.au](mailto:info@bossfire.com.au)**

## BLANK OPENINGS & LINEAR GAPS

Element	Substrate	Batt Configuration	Size (mm)	FRL	Cert Ref
Floor	Min 120mm Concrete	2 x 50mm w/ Ablative coating	200mm Wide x Unlimited Length	Up to -/240/180	FTC 842
Floor	Min 120mm Concrete	2 x 50mm w/ Ablative coating	Up to 1100mm w x 1100mm Wide	Up to -/120/120	FTC 842
Wall	Min 100mm FR Plasterboard, Concrete, Masonry Speedpanel or similar	2 x 50mm w/ Ablative coating	200mm Wide x Unlimited Length	Up to -/240/180	FTC 842
Wall	Min 100mm FR Plasterboard, Concrete, Masonry Speedpanel or similar	2 x 50mm w/ Ablative coating	Up to 1100mm w x 1100mm Wide	Up to -/120/120	FTC 842
Wall	Blank Seal	1 x 50mm w/ Ablative coating	585mm High x 1200mm Wide	-/120/60	FRT 190428
Wall	Blank Seal	1 x 50mm w/ Ablative coating	1000mm High x 1000mm Wide	-/120/60	COT3478

*The table above only relates to BOSS Fire® solutions using the BOSS Batt™ product. For other BOSS Fire® products that offer blank openings systems please consult the BOSS Fire website - [bossfire.com](http://bossfire.com)*

## NON-INSULATED METAL PIPES - FLOORS

Element	Substrate	FRL	Service Type	Service Size	Primary Fire Stopping Element	Secondary Fire Stopping Element	Tertiary Fire Stopping Element	Cert Ref
Floors	Min 150mm Concrete	-/120/120	Steel, Copper & Iron Pipes	32mm Ø	FireMastic-300™ - 10mm x 10mm Surface Fillet Top Side Only - Annular Gap Min 25mm Depth Both Sides	P40-MAK Wrap - 300mm Top Side Only P40-MAK Wrap - 600mm Top Side Only	BOSS Batt - 2 x 50mm Used if needed to fire stop oversize apertures	FAS190346 R1.4
				32mm - 159mm Ø				

*The table above only relates to BOSS Fire® solutions using the BOSS Batt™ product. For other BOSS Fire® products that offer certified non-insulated metal pipe penetration systems please consult the BOSS Fire website - [bossfire.com](http://bossfire.com)*

## NON-INSULATED METAL PIPES – WALLS

Element	Substrate	FRL	Service Type	Service Size	Primary Fire Stopping Element	Secondary Fire Stopping Element	Tertiary Fire Stopping Element	Cert Ref
Walls	Min 96mm Thick: FR Plasterboard / GIB, Concrete, Masonry	-/90/90	Copper / Steel Pipe	19mm Ø	FireMastic-300™ - 50mm x 50mm Fillet	P40-MAK Wrap – 300mm Both Sides	N/A	CSIRO COT 2968
Walls	Min 96mm (90min FRL ) or 116mm (120min FRL): -FR Plasterboard / GIB -Shaftwall / Shaftliner -Concrete -Solid & Hollow Masonry -AFS  Walls with localised build up to min 96mm (90min FRL ) or 116mm (120min FRL): -Speedpanel & Korok -AAC / Hebel -Pronto Panel -Supa Panel  Build up options - 100mm clearance from perimeter of service: -BOSS Batt -FR Plasterboard -Calcium Silicate Board -Shaftwall / Shaftliner	Wall must be minimum 96mm Thick: -/90/90  Or  Wall must be minimum 116mm Thick: -/120/120	Steel, Copper & Iron Pipes	32mm - 80mm Ø	FireMastic-300™ - 20mm x 20mm Surface Fillet - Annular Gap Min 26mm Depth - Both Sides of wall	P40-MAK Wrap - 300mm Both Sides	BOSS Batt - 2 x 50mm Used if needed to fire stop oversize apertures	FAS190346 R1.4
				80mm - 159mm Ø	FireMastic-300™ - 20mm x 20mm Surface Fillet - Annular Gap Min 26mm Depth - Both Sides of wall	P40-MAK Wrap - 600mm Both Sides		
Walls	Min 100mm Thick: FR Plasterboard/GIB Concrete, Masonry Walls with Build Up to Min 100mm: -Speedpanel or similar	-/120/120	Steel & Copper Pipes	Up to 42mm Ø	BOSS Batt - 2 x 50mm with Ablative Coating or BOSS Flexi-Batt - 1 x 100mm with Flexi- Coat-MAK Coating	P40-MAK Wrap - 300mm Both Sides	FireMastic- 300™	FTC 842
Walls	Min 100mm Thick: FR Plasterboard/GIB Concrete, Masonry Walls with Build Up to Min 100mm: -Speedpanel or similar	-/120/120	Steel Pipes	Up to 60mm Ø	BOSS Batt - 2 x 50mm with Ablative Coating or BOSS Flexi-Batt - 1 x 100mm with Flexi- Coat-MAK Coating	P40-MAK Wrap - 300mm Both Sides	FireMastic- 300™	FTC 842
Walls	Min 100mm Thick: FR Plasterboard/GIB Concrete, Masonry Walls with Build Up to Min 100mm: -Speedpanel or similar	-/120/90	Steel & Copper Pipes	Up to 150mm Ø	BOSS Batt - 2 x 50mm with Ablative Coating or BOSS Flexi-Batt - 1 x 100mm with Flexi- Coat-MAK Coating	P40-MAK Wrap - 600mm Both Sides - Wrapped twice around pipe	FireMastic- 300™	FTC 842
Walls	Min 100mm Thick: FR Plasterboard/GIB Concrete, Masonry Walls with Build Up to Min 100mm: -Speedpanel or similar	-/90/30	Steel Pipes	Up to 220mm Ø	BOSS Batt - 2 x 50mm with Ablative Coating or BOSS Flexi-Batt - 1 x 100mm with Flexi- Coat-MAK Coating	P40-MAK Wrap - 300mm Both Sides	FireMastic- 300™	FTC 842

*The table above only relates to BOSS Fire® solutions using the BOSS Batt™ product. For other BOSS Fire® products that offer certified non-insulated metal pipe penetration systems please consult the BOSS Fire website - [bossfire.com](http://bossfire.com)*

## INSULATED METAL PIPES

Element	Substrate	FRL	Service Type	Service Size	Primary Fire Stopping Element	Secondary Fire Stopping Element	Tertiary Fire Stopping Element	Cert Ref
Walls	Min 96mm (90min FRL ) or 116mm (120min FRL): -FR Plasterboard / GIB -Shaftwall / Shaftliner -Concrete -Solid & Hollow Masonry -AFS  Walls with localised build up to min 96mm (90min FRL ) or 116mm (120min FRL): -Speedpanel & Korok -AAC / Hebel -Pronto Panel -Supa Panel  Build up options - 100mm clearance from perimeter of service: -BOSS Batt -FR Plasterboard -Calcium Silicate Board -Shaftwall / Shaftliner	Wall must be minimum 96mm Thick: -/90/90  Or  Wall must be minimum 116mm Thick: -/120/120	Thermobreak Lagged Steel, Copper & Iron Pipes  Lagging Thickness: 30 – 50mm	32mm - 80mm Ø	MaxiCollar™ - Fitted Both Sides FireMastic-300™ - Max 5mm wide x Min 5mm depth flush finish - Both Sides	P40-MAK Wrap - 300mm Both Sides	BOSS Batt - 2 x 50mm Used if needed to fire stop oversize apertures	FAS190346 R1.4
				80mm - 159mm Ø	MaxiCollar™ - Fitted Both Sides FireMastic-300™ - Max 5mm wide x Min 5mm depth flush finish - Both Sides	P40-MAK Wrap - 600mm Both Sides		
				32mm - 80mm Ø	UniWrap® (Multiple Layers) - Fitted Both Sides  FireMastic-300™ - Max 5mm wide x Min 5mm depth flush finish - Both Sides	P40-MAK Wrap - 300mm Both Sides		
				80mm - 159mm Ø	UniWrap® (Multiple Layers) - Fitted Both Sides FireMastic-300™ - Max 5mm wide x Min 5mm depth flush finish - Both Sides	P40-MAK Wrap - 600mm Both Sides		
Floors	Min 150mm Concrete	-/120/120	Thermobreak Lagged Steel, Copper & Iron Pipes  Lagging Thickness: 30 – 50mm	32mm Ø	MaxiCollar™ - Fitted Underside Only FireMastic-300™ - 10mm x 10mm fillet on top side only - Annular Gap Max 5mm wide x Min 25mm depth both sides	P40-MAK Wrap - 300mm Top Side Only	BOSS Batt - 2 x 50mm Used if needed to fire stop oversize apertures	FAS190346 R1.4
				32mm - 159mm Ø	UniWrap® (Multiple Layers) - Fitted Top & Bottom Side FireMastic-300™ - 10mm x 10mm fillet on top side only - Annular Gap Max 5mm wide x Min 25mm depth both sides	P40-MAK Wrap - 600mm Top Side Only		
				32mm Ø	UniWrap® (Multiple Layers) - Fitted Top & Bottom Side FireMastic-300™ - 10mm x 10mm fillet on top side only - Annular Gap Max 5mm wide x Min 25mm depth both sides	P40-MAK Wrap - 300mm Top Side Only		
				32mm - 159mm Ø	UniWrap® (Multiple Layers) - Fitted Top & Bottom Side FireMastic-300™ - 10mm x 10mm fillet on top side only - Annular Gap Max 5mm wide x Min 25mm depth both sides	P40-MAK Wrap - 600mm Top Side Only		
Walls	Min 100mm Thick: FR Plasterboard/GIB Concrete, Masonry Walls with Build Up to Min 100mm: -Speedpanel or similar	-/120/120	Thermobreak Lagged Steel & Copper Pipes (50mm Lagging)	Up to 80mm Ø	BOSS MaxiCollar™ + BOSS Batt - 2 x 50mm with Ablative Coating or BOSS Flexi-Batt - 1 x 100mm with Flexi-Coat-MAK Coating	P40-MAK Wrap - 300mm Both Sides	FireMastic-300™	FTC 842

The table above only relates to BOSS Fire® solutions using the BOSS Batt™ product. For other BOSS Fire® products that offer certified insulated metal pipe penetration systems please consult the BOSS Fire® website - [bossfire.com](http://bossfire.com)

## ELECTRICAL POWER CABLES INCL CABLE TRAYS

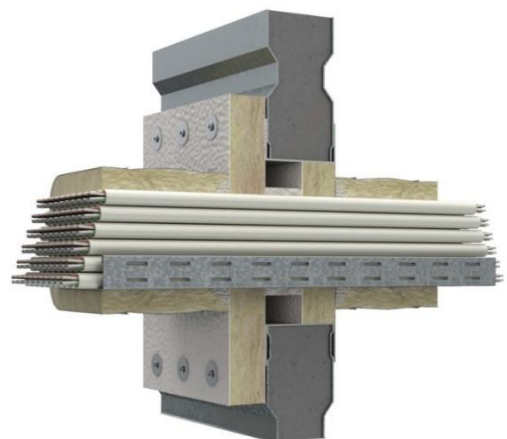
Element	Substrate	FRL	Service Type	Service Size	Primary Fire Stopping Element	Secondary Fire Stopping Element	Tertiary Fire Stopping Element	Cert Ref
Wall	78mm Speedpanel	-/120/120	Power Cable Bundle + Cable Tray	Appendix D1 Electrical Cable Configuration: - 1 x 630mm <sup>2</sup> Single Core - 1 x 185mm <sup>2</sup> 3C+E - 3 x 6mm <sup>2</sup> 3C+E - 8 x 16mm <sup>2</sup> 3C+E	BOSS Batt - 2 x 50mm with Ablative Coating	P40-MAK Wrap™ - 300mm Both Sides	Firesound Mastic to all gaps around cables and batts	CSIRO COT 2822
Walls	Min 100mm Thick: FR Plasterboard/GIB Concrete, Masonry  Walls with Build Up to Min 100mm: -Speedpanel or similar	-/120/120	Power Cable Bundle + Cable Tray	Appendix D1 Electrical Cable Configuration: - 1 x 630mm <sup>2</sup> Single Core - 1 x 185mm <sup>2</sup> 3C+E - 3 x 6mm <sup>2</sup> 3C+E - 8 x 16mm <sup>2</sup> 3C+E	BOSS Batt - 2 x 50mm with Ablative Coating or BOSS Flexi-Batt - 1 x 100mm with Flexi-Coat-MAK Coating	P40-MAK Wrap - 300mm Both Sides	FireMastic-300™	FTC 842
Walls	75mm AAC / Hebel	-/120/30	Power Cable Bundle	Aluminium Core Cables: - 2 x 70mm <sup>2</sup> Conductor - 2 x 120mm <sup>2</sup> Conductor - 2 x 185mm <sup>2</sup> Conductor - 2 x 240mm <sup>2</sup> Conductor	Cable Transit CT120 - 100	BOSS Batt build up to both sides of wall.	FireMastic-300™	SFC FRT 180473b.2

The table above only relates to BOSS Fire® solutions using the BOSS Batt™ product. For other BOSS Fire® products that offer certified electrical power cable penetration systems please consult the BOSS Fire® website - [bossfire.com](http://bossfire.com)

## COMMS / DATA CABLES INCL CABLE TRAYS

Element	Substrate	FRL	Service Type	Service Size	Primary Fire Stopping Element	Secondary Fire Stopping Element	Tertiary Fire Stopping Element	Cert Ref
Wall	78mm Speedpanel	-/120/120	Comms Cable Bundle + Cable Tray	Appendix D2 Telecommunications Cable Configuration - Bundle 60 Cables - Approx. 14mm Dia. Ea.	BOSS Batt - 2 x 50mm with Ablative Coating	P40-MAK Wrap™ - 300mm Both Sides	Firesound Mastic to all gaps around cables and batts	CSIRO COT 2823
Walls	Min 100mm Thick: FR Plasterboard/GIB Concrete, Masonry  Walls with Build Up to Min 100mm: -Speedpanel or similar	-/120/120	Comms Cable Bundle + Cable Tray	Appendix D2 Telecommunications Cable Configuration - Bundle 60 Cables - Approx. 14mm Dia. Ea.	BOSS Batt - 2 x 50mm with Ablative Coating or BOSS Flexi-Batt - 1 x 100mm with Flexi-Coat-MAK Coating	P40-MAK Wrap - 300mm Top Side Only	FireMastic-300™	FTC 842

The table above only relates to BOSS Fire® solutions using the BOSS Batt™ product. For other BOSS Fire® products that offer certified comms & data cable penetration systems please consult the BOSS Fire® website - [bossfire.com](http://bossfire.com)



## MIXED SERVICE COMBINATIONS

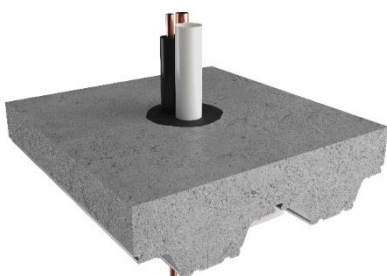
Service Penetration	Element	Substrate	System Description	Seal Size	FRL	Specific Dimensions	Cert Ref
Mixed Service Combinations: Electrical Plumbing HVAC+R	Wall / Floor / Ceilings	Wide variety of flexible and rigid walls, concrete floor slabs and ceiling / floor systems.  For more info refer <a href="#">BOSS Fire Transit Box documentation</a> .	BOSS Fire® Transit Box with P40-MAK Wrap™.  FireMastic-300™ perimeter seal.	Perimeter Seal around box. Refer certification.	-/60/60 -/90/90 -/120/120	Mixed Combinations. For more info refer <a href="#">BOSS Fire Transit Box documentation</a> .	Refer specific product technical information.

Please refer directly to BOSS Fire® Multi-Service Transit Box for a wider variety of mixed service combinations including an extensive list of approved electrical, plumbing and HVAC solutions. Whilst BOSS P40-MAK Wrap™ is used as thermal insulation blanket for the BOSS Fire® Multi Service Transit Box, the range of solutions are too extensive to include in this document. Please consult the BOSS Fire® website - [bossfire.com](http://bossfire.com)

## COMBUSTIBLE PIPES & PAIRCOIL – WALLS & FLOORS

Element	Substrate	FRL	Service Type	Service Size	Primary Fire Stopping Element	Secondary Fire Stopping Element	Tertiary Fire Stopping Element	Cert Ref
Floors	Comflor®60 Min 130mm Thick	-/120/120	25mm uPVC Pipe	33.6mm Ø	BOSS MaxiCollar™ 32mm to underside.	BOSS Batt – 265mm x 265mm Over rib w/ trapezoid shaped BOSS Batt infill to underside.	FireMastic-300™ to annular gap.	SFC FRT 180137a.2
Floors	Comflor®60 Min 130mm Thick	-/120/120	100mm uPVC Pipe	109.8mm Ø	BOSS MaxiCollar™ 100mm to underside.	BOSS Batt – 330mm x 330mm Over rib w/ trapezoid shaped BOSS Batt infill to underside.	FireMastic-300™ to annular gap.	SFC FRT 180137a.2
Floors	Comflor®60 Min 130mm Thick	-/120/120	75mm HDPE Pipe	75mm Ø	BOSS MaxiCollar™ 75mm to underside.	BOSS Batt – 290mm x 290mm Over rib w/ trapezoid shaped BOSS Batt infill to underside.	FireMastic-300™ to annular gap.	SFC FRT 180137b.2
Floors	Comflor®60 Min 130mm Thick	-/120/120	Paircoil Bundle	16mm & 6mm Paircoil w/ 25mm uPVC Pipe.	FireMastic-HPE™ to annular gap in Batt. 20mm W x 25mm D.	BOSS Batt – 300mm x 300mm Over rib w/ trapezoid shaped BOSS Batt infill to underside.	FireMastic-HPE™ to annular gap in top side x 25mm D	SFC FRT 180137b.2
Wall	Blank Seal	-/120/120	100mm uPVC Pipe	109mm Ø	BOSS MaxiCollar™ 100mm	BOSS Batt – Single Layer blank seal with localised 2 <sup>nd</sup> layer BOSS Batt Build Up 320mm x 320mm.	BOSS MaxiCollar™ 100mm with infill of FireMastic-300 to annular gap.	FRT 190428
Wall	Blank Seal	-/120/90	3 x A/C Paircoil	3 x Paircoil A/C Copper 19.05mm & 9.52mm with 13mm thick FR Lagging.	BOSS MaxiCollar™ 100mm	BOSS Batt – Single Layer blank seal with localised 2 <sup>nd</sup> layer BOSS Batt Build Up 320mm x 320mm.	BOSS MaxiCollar™ 100mm with infill of FireMastic- HPE™ to depth of collar.	FRT 190428

The table above only relates to BOSS Fire® solutions using the BOSS Batt™ product. For other BOSS Fire® products that offer combustible pipe penetration systems please consult the BOSS Fire® website - [bossfire.com](http://bossfire.com)



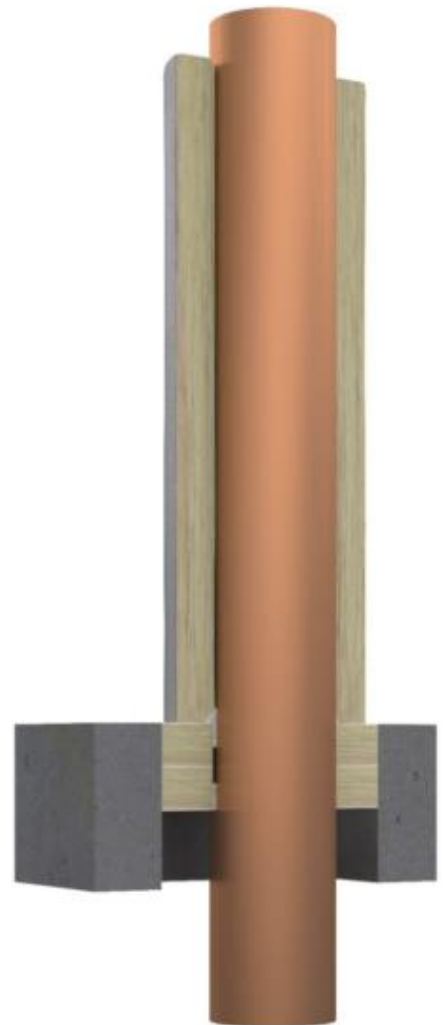
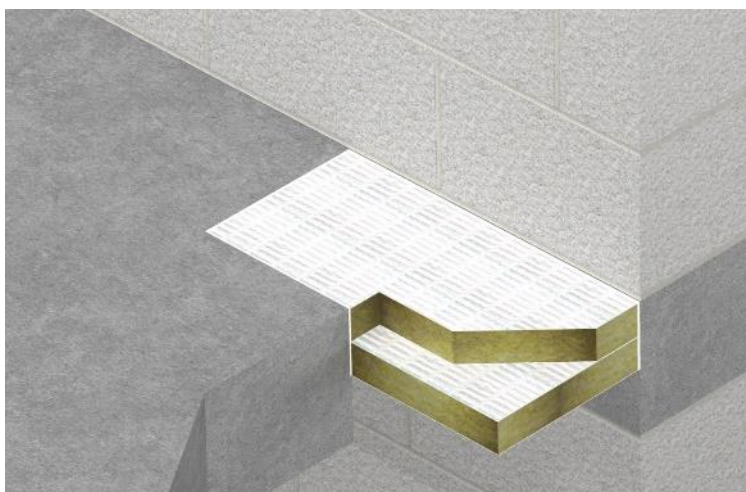
## FIXING AND FASTENING

Where BOSS Batts are to be fixed together or to substrates, FireMastic-300™ sealant can be used to act as a binding agent and also provides fire rating to the seal. BOSS Ablative Coating (Trowel Grade) is also ideal for such applications, and both sides to be joined can be coated to form a strong and durable bind. Ablative Coating is available in 5kg pails.

For additional support, batts can be overlaid with each other using a 100mm wide strip of BOSS Batt to shutter across the joint. “Pig-Tail” fasteners can also be used to join batts together as they provide a wide-rim fixing that prevents pull-through.

BOSS Batt can also be fixed to substrates using large washers with an appropriate fixing relevant to the proposed substrate.

**Always ensure that the fixing method and proposed position of the BOSS Batt is in accordance with the certified system. For copies of the certification please contact BOSS technical services on [info@bossfire.com.au](mailto:info@bossfire.com.au) or call 1300 502 677 or +61 2 9531 8591.**





## INSTALLATION – GUIDE ONLY

### **Preparation:**

1. Ensure that you have read and understood the product certification and that your proposed application is in accordance with eth approved certification.
2. Remove dust, debris and unnecessary combustible materials from openings. Use a dust pan and brush, sweep all loose products and debris from the inner surface of the opening and surrounding area. Place a sheet beneath the working area to catch any falling materials.
3. Unless the system is approved with insulation lagging with the service, remove the insulation lagging to ensure a good seal with the BOSS Batt system in accordance with the approved system.

### **Installation:**

Wear protection gloves and safety glasses to avoid skin and eye contact.

4. Cut BOSS Batt to suit the opening. Where fixing to a wall or substrate ensure overlap of Batt to wall or floor system is in accordance with the tested system. Measure the size of the opening, relevant position and size of the services. Mask all surfaces where necessary to ensure the aesthetics of the ablative coating. Draw these details onto the BOSS Batt and cut out using a saw or bread knife or Stanley knife.
5. Apply FireMastic-300™ sealant or BOSS Ablative Coating to all cut surfaces of BOSS Batt ensuring all exposed mineral fibres are covered with a 1mm thick wet coating. Also apply to the mating substrate areas of contact around the opening and services.
6. Assemble batt into the opening, ensuring the specific orientation is in accordance with the approved system. Some options include friction fitting, or fitting to the substrate overlapping edges of substrate or using bracket system where required. For friction fitment cut the BOSS Batt into the opening, ensuring a tight friction fit. Push the Batt firmly in to the opening using the flat of the hand or lightly tapping with a rubber mallet.
7. Continue the above procedure to fill the opening ensuring that a layer of Ablative Coating or FireMastic-300™ is applied to all areas of contact between the Batts. The seal should be made up from as few pieces of Batt as practicable. Any small gaps in the seal left when all cut pieces have been installed should be tightly packed with off-cuts and covered with FireMastic-300™. A layer of Bulkhead Sealant should be applied to all joint lines formed by piecing the seal together.
8. For external fitment to slabs ensure using the appropriate mechanical fixing in accordance with the approved system to the substrate in conjunction with large mud flap washer or penny washer to stop fixing pulling through into the Batt.
9. To complete the installation a small bead of FireMastic-300™ Sealant should be applied around the extremities of the opening and services. Whatever the edges of the seal line with the wall / floor surface, the bead of sealant should be smoothed to overlap the wall / floor surface by approximately 5mm.
10. Remove any masking and dispose of waste materials. When a fire seal is built up as outlined above the joints must be offset.
11. Apply other firestopping products as per the approved system. Example P40-MAK Wrap or MaxiCollars™ e.
12. Maintain record of installation and label accordingly.

**Always ensure that the fixing method and proposed position of the BOSS Batt is in accordance with the certified system. For copies of the certification please contact BOSS technical services on [info@bossfire.com.au](mailto:info@bossfire.com.au) or call 1300 502 677 or +61 2 9531 8591.**

## HEALTH AND SAFETY

To learn more about the safe handling of BOSS Batts, see the Safety Data Sheet available at [bossfire.com](http://bossfire.com)

## IS THIS PUBLICATION CURRENT?

This document may be superseded by new versions. If you are unsure of whether or not this document is a current publication, please call us on +61 2 9531 8591 to confirm.

## LIMITATION

BOSS Fire & Safety Pty Ltd has provided the above technical information in good faith and to the best of its knowledge. This information was deemed to be correct at the time of publication. Should any data come to BOSS Fire & Safety's attention relating to the fire resistance or performance of the product described, BOSS Fire & Safety reserve the right to amend this report.

BOSS Fire & Safety strive to constantly improve and develop products so this information may change without notice.

The information contained herein has been developed as a guide only and it does not constitute a guarantee of compliance of all applications. Each project and/or application may have specific requirements and you should investigate these carefully. Ensure that you have read and understood the appropriate certification relative to your needs, and ensure you seek acceptance from the Certifying Authority or compliance inspector before installation. For updates on the range of BOSS Fire® certification please contact BOSS Technical Services. +61 2 9531 8591

## FURTHER INFORMATION

For additional technical information on the performance of BOSS Batts, other BOSS Fire® products or any other BOSS Fire® related information please contact us on:

**AU:**

1300 50 2677

[Bossfire.com.au](http://Bossfire.com.au)**NZ:**

0800 50 2677

[Bossfire.co.nz](http://Bossfire.co.nz)**Admin:**

+612 9531 8591

[info@bossfire.com.au](mailto:info@bossfire.com.au)

Unit 1, 16 Atkinson Rd Taren Point NSW 2229 AUSTRALIA