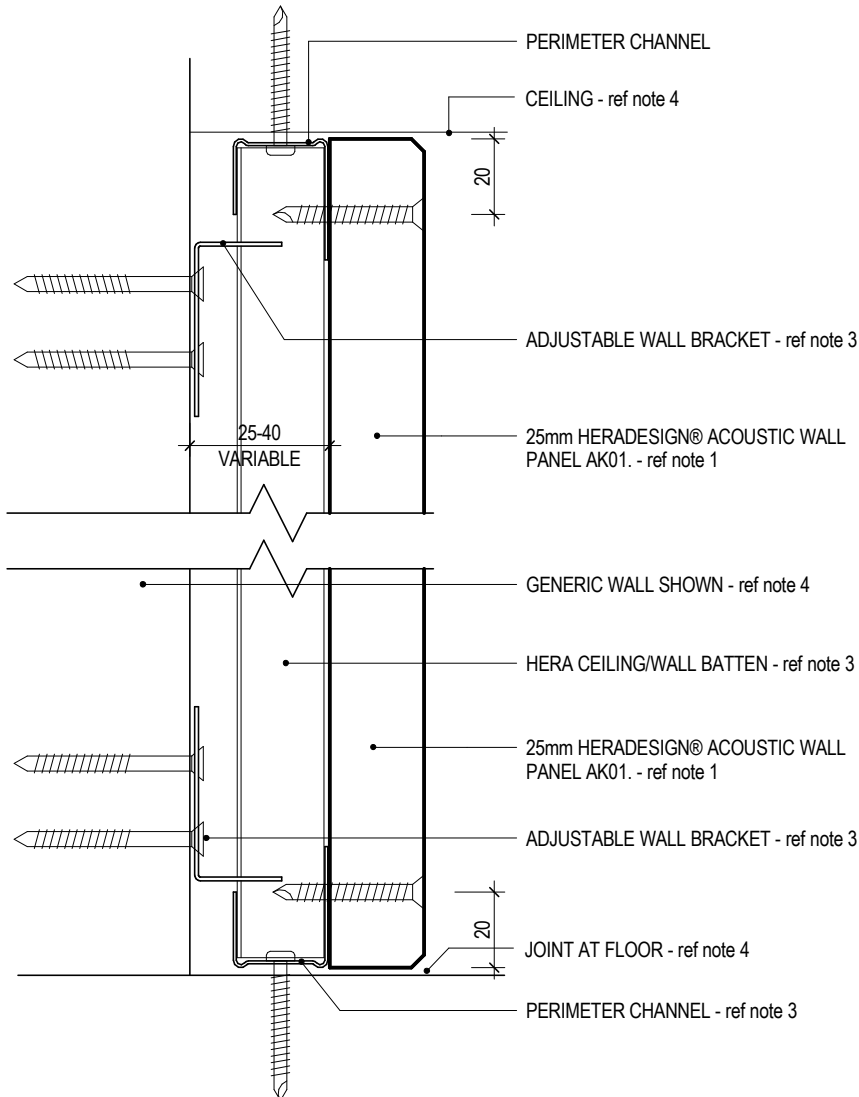


**HERADESIGN® SYSTEM GENERAL NOTES:**

1. NOMINAL 25mm HERADESIGN® SHEET SHOWN - 15mm sheet also available for ceiling use only. Refer to manual for additional sheet options.
2. CEILING FRAMING PIS (Potter Interior Systems) - refer to PIS technical manual for span tables. Hangers @ 1200 crs, Hera battens @ 400 crs for 15mm or @ 600 crs for 25mm sheet.
3. WALL FRAMING PIS Hera Wall Batten on adjustable clip fixings - refer to PIS technical manual. 25mm sheet only on Hera battens spaced @ 400 crs for impact.
4. AS NOTED - refer Architects drawings and specifications.



**POTTER**  
INTERIOR SYSTEMS



**HERADESIGN® SUSTAINABLE ACOUSTIC SOLUTIONS**  
**HERADESIGN® WALL SECTION DETAIL**  
**SECTION DETAIL**

**H1.3.1**  
SHEET

1:2@A4  
SCALE

A 17/07/15  
ISSUED DATE

0800 POTTER (0800 768 837) WWW.POTTERS.CO.NZ  
DETAILS SUBJECT TO CHANGE WITHOUT NOTICE

