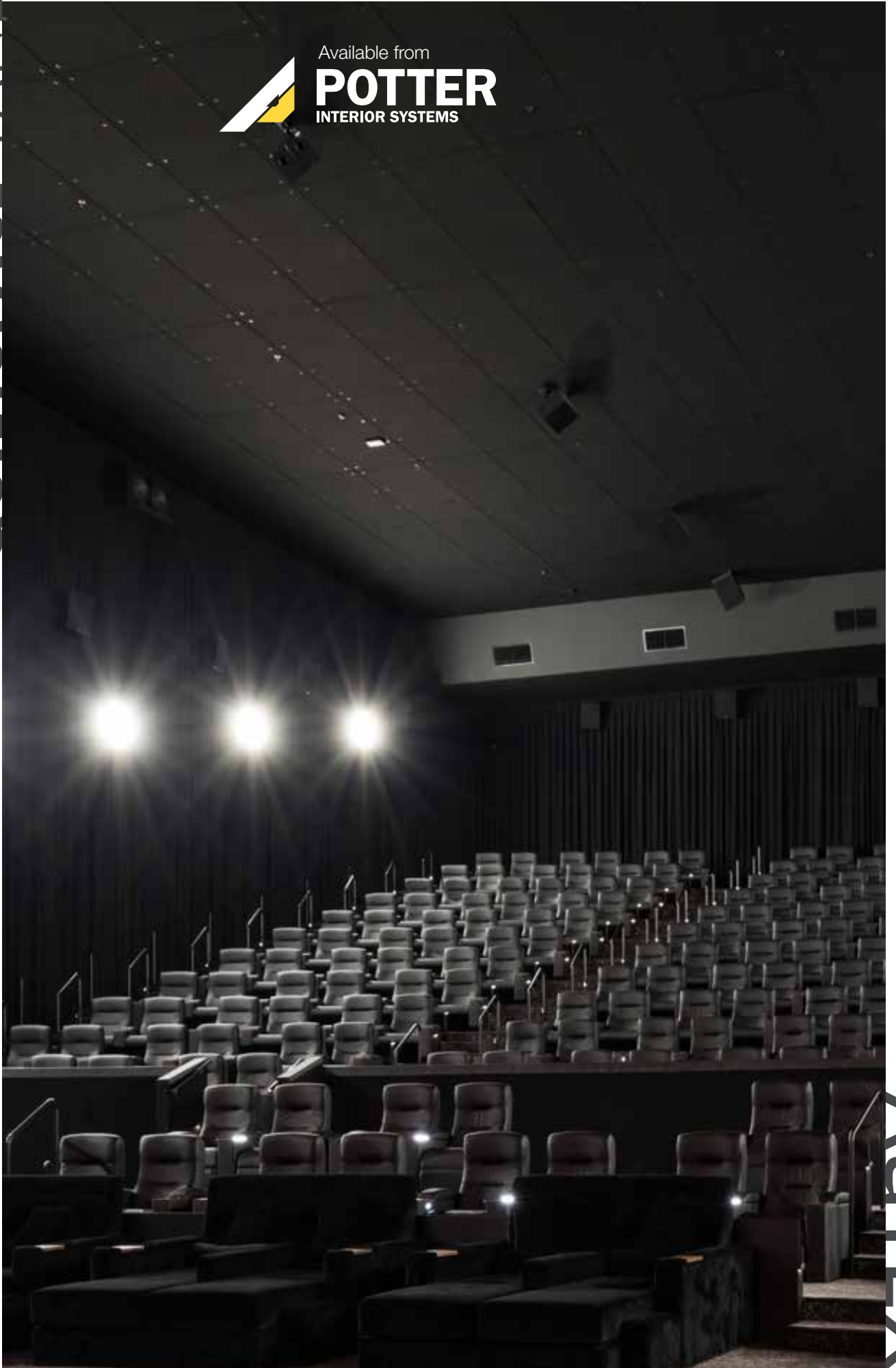


QUIETSPACE PANEL

Available from
POTTER
INTERIOR SYSTEMS



AUTEX



QUIETSPACE® PANEL
COLOUR: NUDE WHITE



QUIETSPACE® **PANEL**

When there is no room for compromise, Quietspace® Panel is the best solution for superior sound absorption without it being obvious. Quietspace Panel has been engineered to absorb a minimum of 85% of the sound energy it meets. This means annoying and distracting noise no longer feels that way.

Intentionally designed in three of the most common interior colours; black, grey and white, Quietspace Panel can easily blend into ceilings and walls to simply do its job. But if you would like to turn your acoustics into a design element without losing the performance, simply use the ultimate upgrade; and combine with Autex Vertiface®. Face your panels in any of our colours to create full feature walls or custom shapes and designs. Anything is possible.

Available in 25mm, 50mm, 75mm and 100mm there's no acoustic challenge Quietspace Panel can't meet.

APPLICATIONS

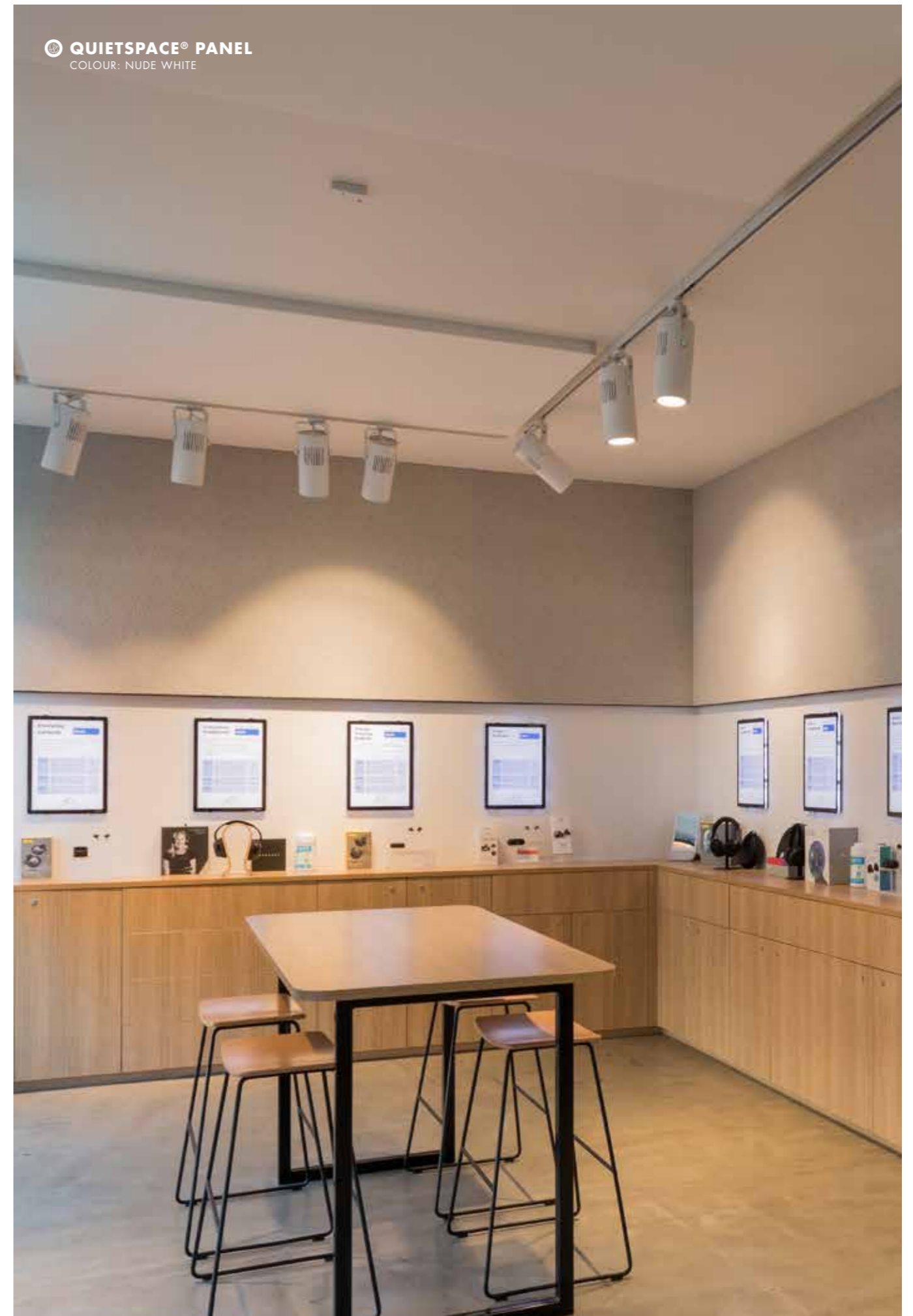
- High performance acoustic panel for commercial interior sound control with a sophisticated appeal
- Refined acoustic surface for framed modular office partition panelling
- Direct fixed to ceilings
- Wallcovering with exceptional absorption of reverberated noise
- Functional acoustic wallcovering for retail and commercial interiors
- A decorative feature with custom cut options available

SPECIFICATION

(Wall/Ceiling) treatment shall be Quietspace® Panel from thermally bonded polyester containing not less than 45% recycled material as manufactured by Autex www.autexindustries.com

Panel 1220mm x 2440mm x ()mm nom depth, sound absorption: 25mm: Class C, NRC 0.85, 50mm: Class A, NRC 1.00. Fire rating 25mm, 50mm, 75mm and 100mm: ISO9705: Classification: Group 1-S, AS ISO 9705 – 2003: Group 1, EN13501-1:2007: B – s2, d0 50mm: EN13501-1:2007+A1:2009: B - s2, d2

Install as per Autex recommendations. If Quietspace® Panel is to be specified for use other than as a ceiling or wallcovering please seek guidance from your Autex Account Manager.

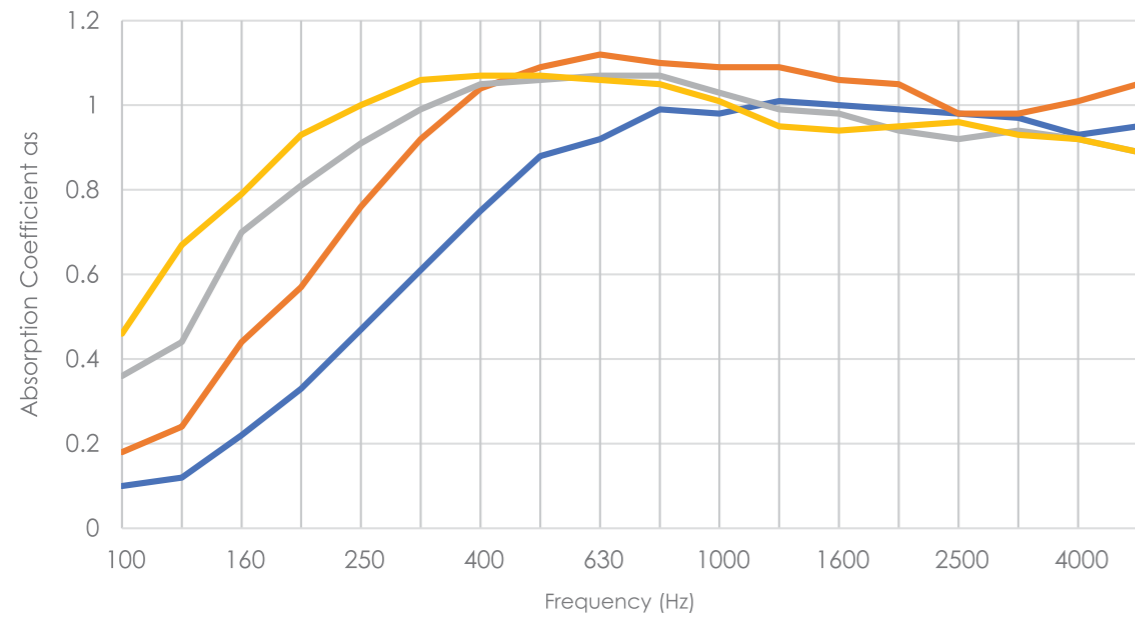


OPEN SPACE COMFORT

Reduce reverberated noise in large open areas
with Quietspace® Panel on the ceiling.



ABSORPTION COEFFICIENT ACCORDING TO ISO 354.



Description	University of Auckland Test report Number	Frequency (Hz)						NRC
		125	250	500	1000	2000	4000	
25mm	T0712-18	0.15	0.45	0.85	1.00	1.00	0.95	0.85
50mm	T1228-8	0.30	0.75	1.10	1.10	1.05	1.00	1.00
75mm	T1905-4	0.50	0.90	1.05	1.05	0.95	0.90	1.00
100mm	T1905-5	0.65	1.00	1.05	1.00	0.95	0.90	1.00

Table presents the practical sound absorption coefficients as according to ISO 11654. Graph presents third octave sound absorption coefficients (According to ISO 354 Measurement of sound absorption in a reverberation room.) The NRC rating is determined as the arithmetic average of the absorption coefficients measured by one-third octave bands centred on 250 Hz, 500 Hz, 1000 Hz and 2000 Hz, and rounded to the nearest 0.05.

PRODUCT SPECIFICATIONS

Product Name Quietspace® Panel
 Composition 100% Polyester Fibre (PET)
 Panel Dimensions 1220mm x 2440mm
 Tolerance (+5mm) x (+10mm)
 Thickness 25mm 50mm 75mm 100mm
 Tolerance (+/- 6%) (+/- 6%) (+/- 6%) (+/- 6%)
 Weight 2300gsm 3800gsm 4050gsm 4300gsm

LIGHT REFLECTANCE

White Quietspace® Panel is suitable for indoor use only and has a light reflectance value of 83 (measured in accordance with BS 8493:2008+A1:2010)

THERMAL PERFORMANCE

(Internally tested by Autex Lab)
 25mm R0.6 (@15°C)
 50mm R1.4 (@15°C)
 75mm R1.9 (@15°C)
 100mm R2.4 (@15°C)

ACOUSTIC PERFORMANCE

Quietspace Panel is specifically designed to reduce and control reverberated (echo) noise in building interiors.
 Minimum Noise Reduction Coefficient 0.85

INSTALLATION

Install as per Autex recommendations. Install instructions are included in each pack or available on the website. If Quietspace Panel is to be specified for use other than as a wallcovering, please seek guidance from your Autex account manager.

FIRE RATINGS

Quietspace® Panel has been evaluated using the following test methods:

ISO 9705: 1993
 Classification: Group 1-S
 Smoke Production Rate: <5.0m²/s
 As required by NZBC C/VM2

AS ISO 9705 - 2003
 Classification: Group 1
 (SMOGRARC): <100m²/s²
 Assessed using methodology AS ISO 9705:2003 in accordance with AS 5637.1:2015, as required by BCA Specification C1.10-4.
 FI 4871 dated 11th July, 2012
 FAR 4055-2 dated 8th October, 2013

EN13501-1:2007 (25mm Quietspace® Panel)
 B - s2, d0
 Report 185157 dated 22nd July, 2009

EN13501-1:2007+A1:2009 (50mm Quietspace® Panel)
 B - s2, d2
 Report WF 336912 dated 25th February, 2014

ASTM E84 - 14 (1" Quietspace® Panel)
 Class A, FS:0 - SD:10
 RJ3297-7 dated 12th June 2014

WATER VAPOUR SORPTION

ASTM C1104 / C1104M-13a
 Test conditions: 49°C, 95%RH
 Water vapour absorbed and adsorbed after 4 days: 0.4% by weight

IMPACT RESISTANCE

ISO 7892:1988
Hard Body Impact
 There is no surface damage or penetration to Quietspace Panel when subjected to hard body impacts. When adhered to 10mm plasterboard, the system can resist a 14-joule impact. This is equivalent to the impact of a 0.5kg object dropped from a 3m height. A small indentation might be observed when subjected to an impact equivalent to the impact of a 0.5kg object dropped from a 0.5-m height.

Soft Body Impact

There is no surface damage or penetration to Quietspace Panel when subjected to soft body impacts. When adhered to 10mm plasterboard, the system can resist a 120-joule impact. This is equivalent to the impact of a 50-kg object dropped from a 250mm height.

MICROBIAL RESISTANCE

ASTM G21-15
 Growth Rating: 0 (No growth)
 Quietspace Panel does not promote the growth of moulds and mildew.

PATTERN REPEAT

Non-woven. No pattern repeat but product has directional grain. Product may vary from samples and batch to batch due to fibre blending and lay-up which is an inherent feature of this product.

FABRIC CARE

Blot spills from fabric quickly. Wipe with a damp cloth. Avoid rubbing and excessive amounts of water as this will affect the finish. Use carpet or upholstery shampoo as directed. Blot with a clean dry cloth after each application of solution. Custom printed Quietspace Panel requires the services of a specialist cleaning company. Refer to the Quietspace Panel Cleaning and Maintenance Guide for more information.

ENVIRONMENTAL

Autex is committed to best practice through our ISO 9001 and ISO 14001 certified Quality and Environmental Management Systems.
 Autex Quietspace Panel contains a minimum of 45% previously recycled polyester fibre (from PET bottle-flake). Off-cuts and manufacturing waste are re-used or recycled wherever possible.
 Autex Quietspace Panel is manufactured from 100% polyester fibres and does not contain formaldehyde binders. Autex polyester fibres support safer indoor air quality and will not become a potential airborne pollutant.

SERVICE

For further information about Quietspace Panel or any other Autex product, please contact your Autex account manager or visit our website.



CARING FOR THE ENVIRONMENT

Quietspace® Panel is manufactured using 100% polyester fibre and contains a minimum of 45% previously recycled fibre (from PET plastics). Our products are designed to be recycled at the end of their life too.

We use Life Cycle Analysis (LCA) to understand the environmental impacts of our products and set targets to reduce these. All our products have been verified as low VOC and are free from chemical binders making them great for indoor environmental quality (IEQ).

We have continual improvement programmes in which we implement a range of initiatives to mitigate the environmental 'hotspots' that we have identified. Our products are GreenRate Level A, LCARate Gold and PHD level platinum certified. Quietspace Panel is Declare certified to be Red List free and can be used in Living Building Challenge projects.

Autex has a high functioning Environmental Management System (ISO 14001) to enhance our environmental performance and contribute to sustainable development.



Declare.

